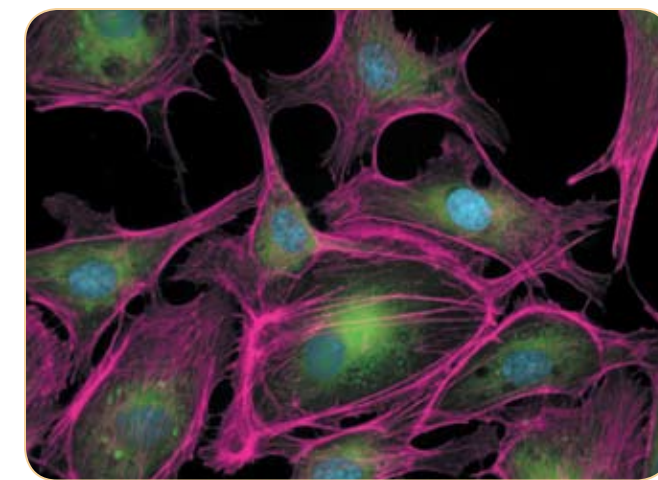
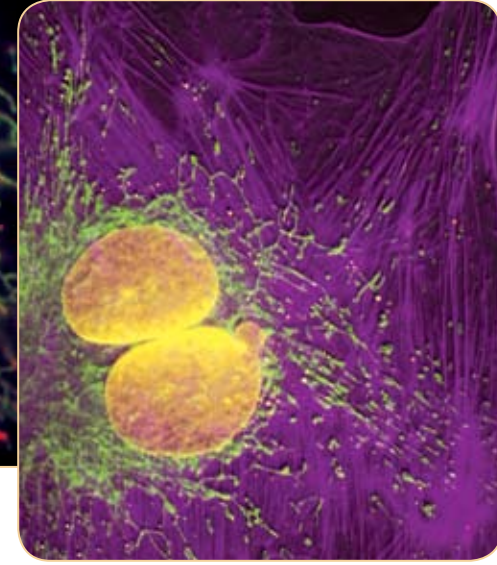
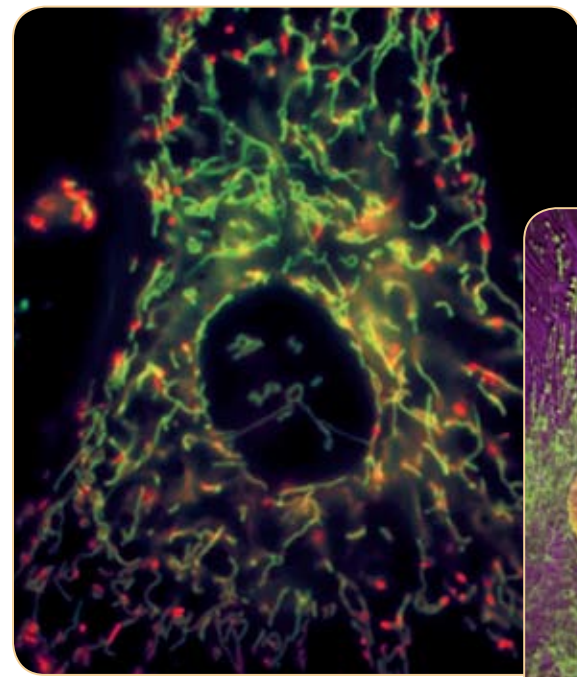


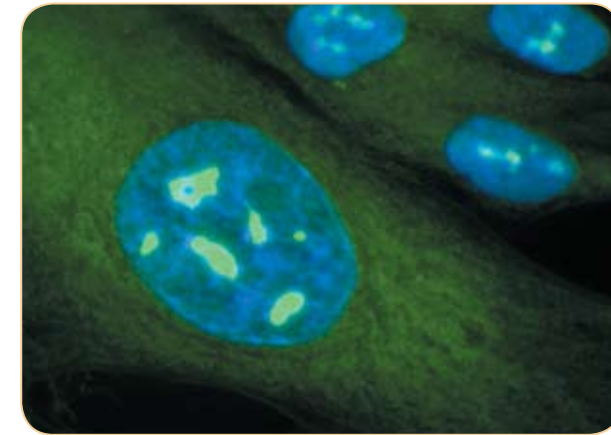
The Illuminated Cell

In vitro Cellular Analysis—biology in context



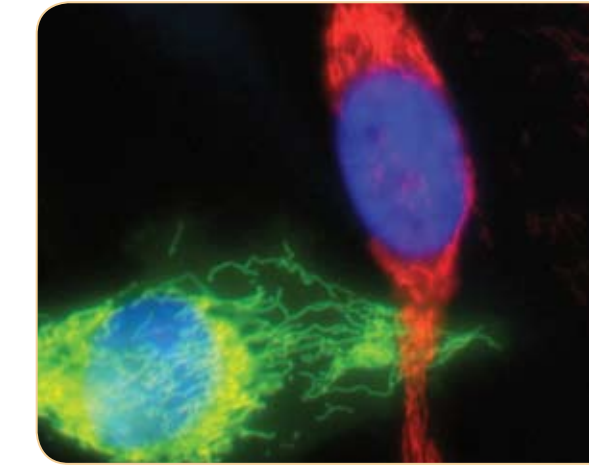
14. Nucleus

- 036219 Organelle Lights™ Nuc-YFP
- 036220 Organelle Lights™ Nuc-OFP
- S7576 SYTO® 14
- S11341 SYTO® 59
- D1306 DAPI
- H3570 Hoechst 33342
- S34859 SYTOX® Red
- S7020 SYTOX® Green
- T3605 TO-PRO®-3 iodide



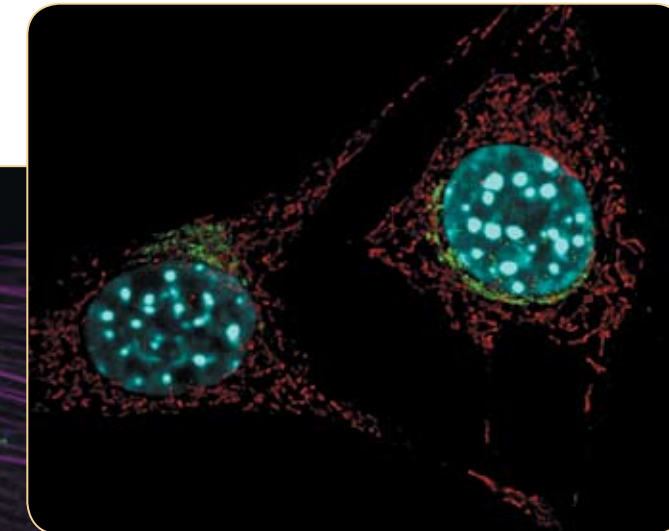
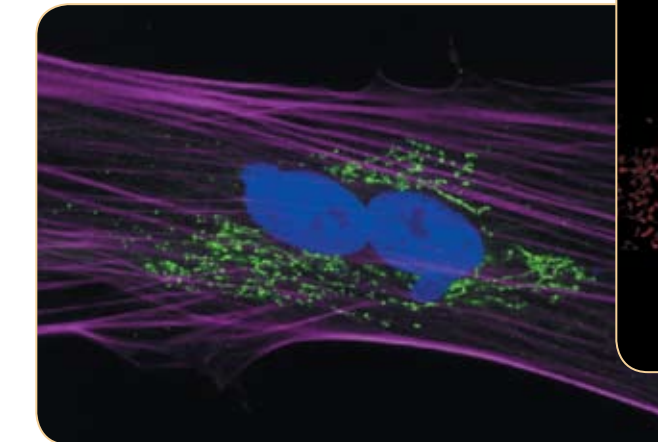
1. Nucleoli

- S32703 SYTO® RNASelect™ green fluorescent cell stain



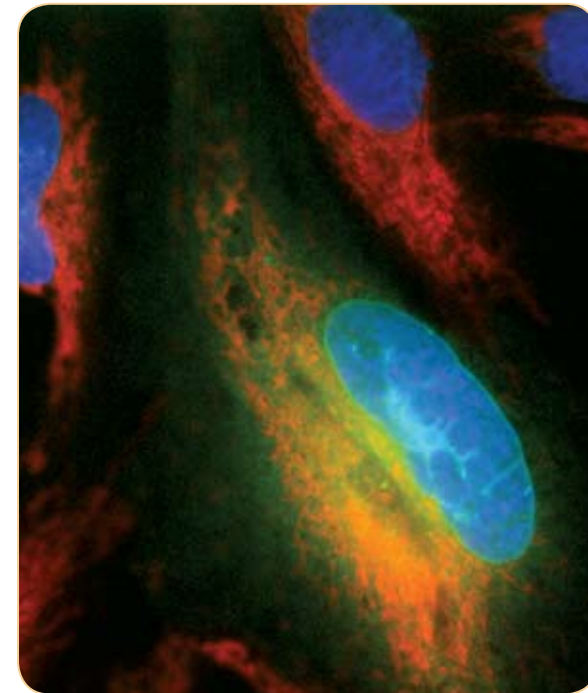
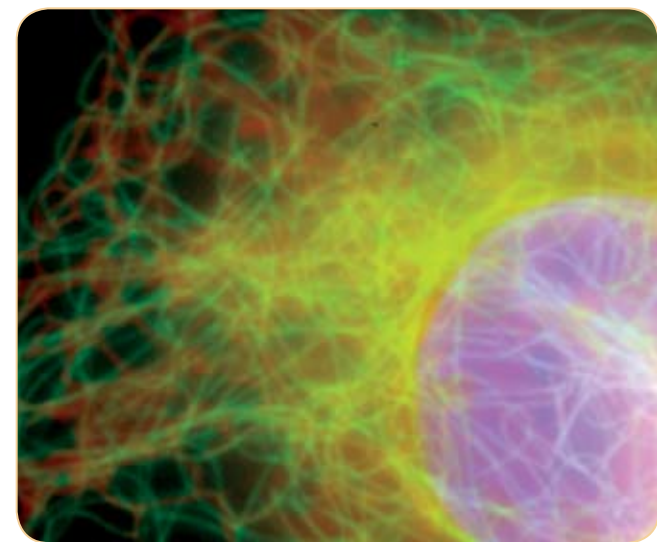
2. Endoplasmic Reticulum

- E34251 ER-Tracker™ Green
- E34250 ER-Tracker™ Red
- 036223 Organelle Lights™ ER-OFP
- S34200 SelectFX® Alexa Fluor® 488 Endoplasmic Reticulum Labeling Kit



3. Golgi Complex

- 036215 Organelle Lights™ Golgi-GFP
- 0362224 Organelle Lights™ Golgi-OFP
- A21270 anti-golgin-97
- N22651 NBD C₅-ceramide complexed to BSA
- B22650 BODIPY® FL C₅-ceramide complexed to BSA
- B34400 BODIPY® TR C₅-ceramide complexed to BSA

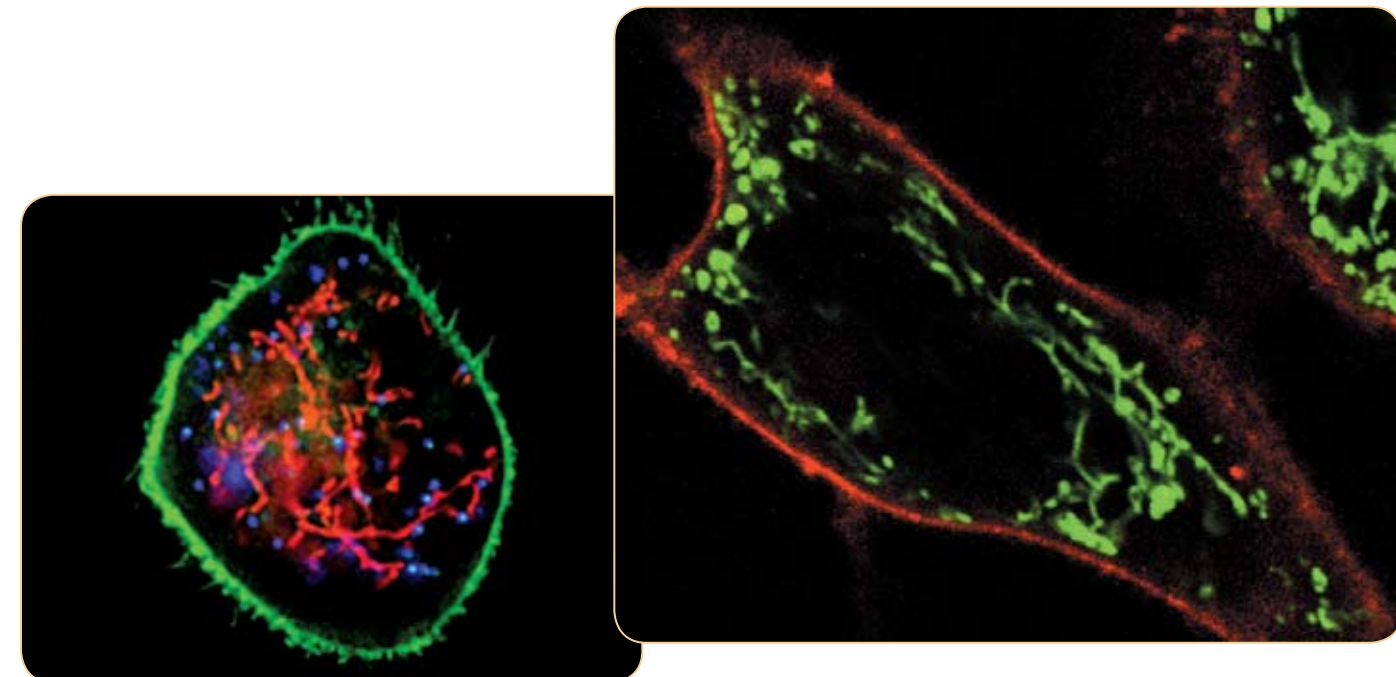


12. Nuclear Envelope

- 036213 Organelle Lights™ NE-GFP

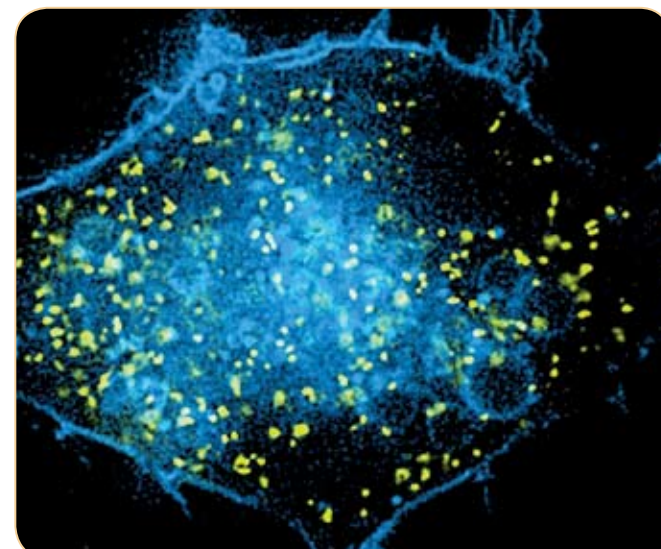
11. Cytoskeleton/Tubulin

- T34075 TubulinTracker™ Green
- T34561 TC-FIAsH™ mammalian TC-Tag Gateway® expression vectors
- A11126 anti- α -tubulin



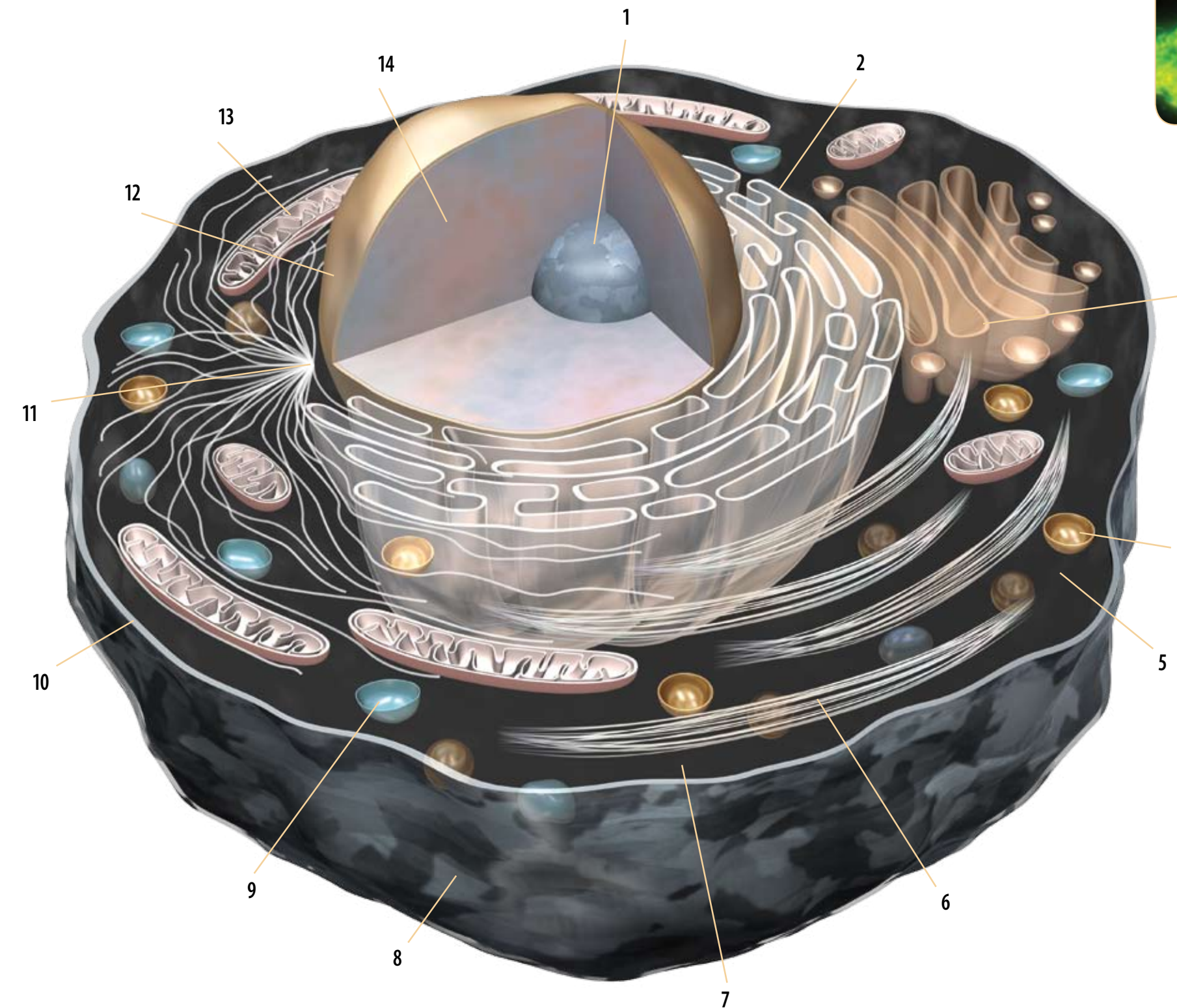
10. Plasma Membrane

- F34653 FM® 4-64FX *fixable analog of FM® 4-64 membrane stain*
- F35355 FM® 1-43FX *fixable analog of FM® 1-43 membrane stain*
- 036216 Organelle Lights™ PM-CFP
- 036217 Organelle Lights™ PM-YFP
- 036226 Organelle Lights™ PM-OFP
- C10045 CellMask™ Orange plasma membrane stain
- C10046 CellMask™ Deep Red plasma membrane stain
- W11262 Alexa Fluor® 594 wheat germ agglutinin



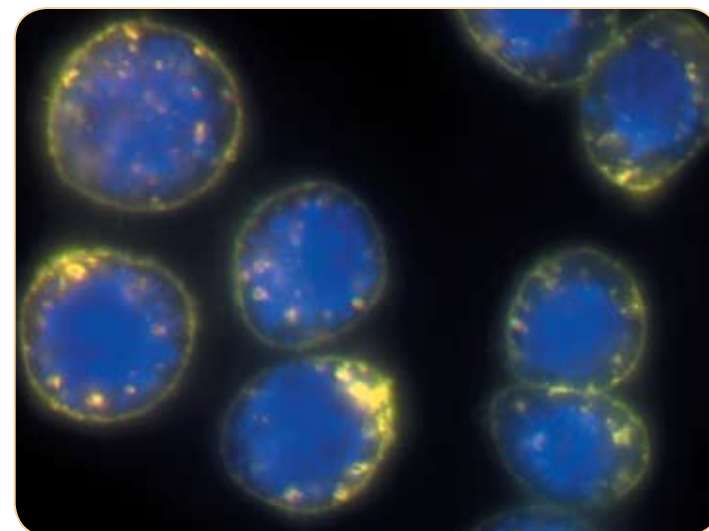
9. Peroxisomes

- 036215 Organelle Lights™ Peroxi-GFP
- 036225 Organelle Lights™ Peroxi-OFP
- S34201 SelectFX® Alexa Fluor® 488 Peroxisome Labeling Kit



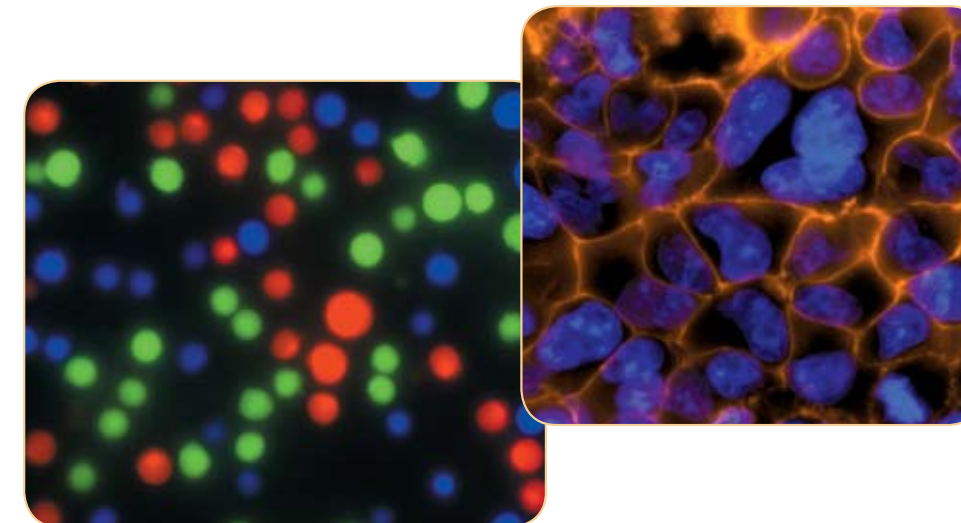
8. Lipid Rafts

- B13950 BODIPY® FL C₅-ganglioside G_{M1}
- V34403 Vybrant® Alexa Fluor® 488 Lipid Raft Labeling Kit
- V34404 Vybrant® Alexa Fluor® 555 Lipid Raft Labeling Kit
- V34405 Vybrant® Alexa Fluor® 594 Lipid Raft Labeling Kit



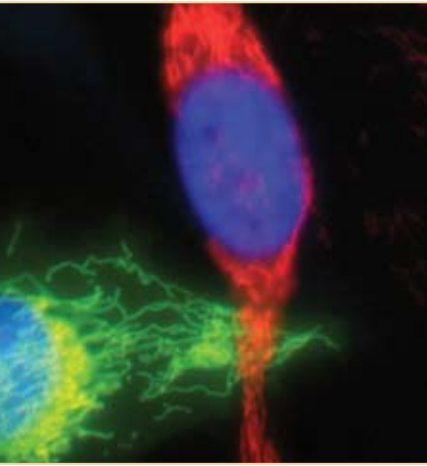
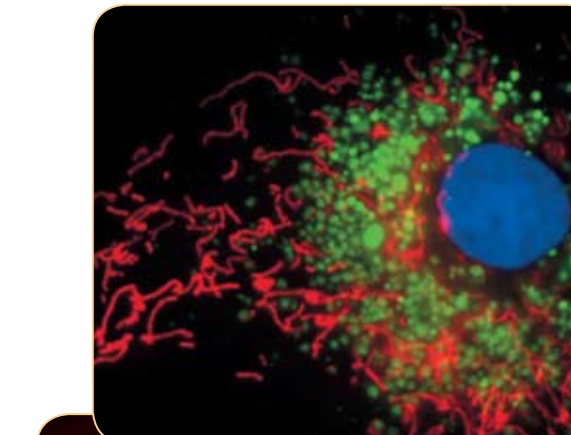
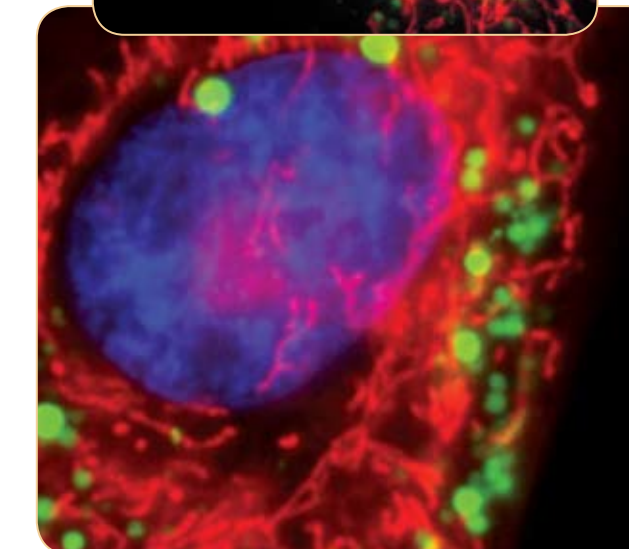
7. Cytosol

- H32711 HCS CellMask™ Red cytoplasmic/nuclear stain
- H34560 HCS CellMask™ Deep Red cytoplasmic/nuclear stain
- H34558 HCS CellMask™ Blue cytoplasmic/nuclear stain
- 036227 Organelle Lights™ Cyto-GFP
- C2927 CellTracker™ Orange CMTMR
- C2925 CellTracker™ Green CMFDA
- C34552 CellTracker™ Red CMPFX
- Q25021 Qtracker® 655 Cell Labeling Kit
- C3100MP calcein, AM



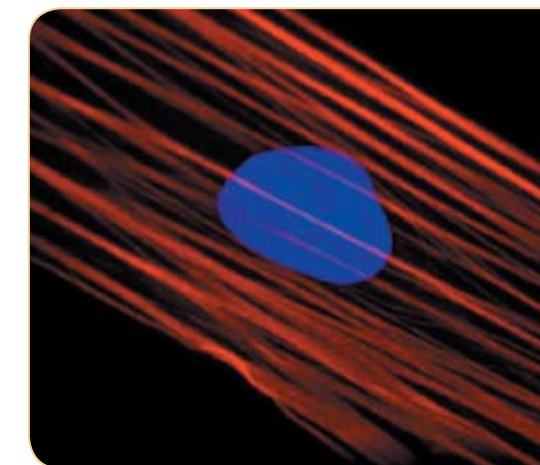
4. Lysosomes

- L7528 LysoTracker® Red DND-99
- L7526 LysoTracker® Green DND-26
- L7545 LysoSensor™ Yellow/Blue DND-160



6. Cytoskeleton/Actin

- A12379 Alexa Fluor® 488 phalloidin
- R415 rhodamine phalloidin
- A12381 Alexa Fluor® 594 phalloidin



5. Biosensors

- | | | | |
|------------------------------------|--|---|--|
| Cytosolic Ca²⁺ | | Cytosolic pH | |
| P36207 Cameleon | | B1150 BCECF, AM | |
| F36205 Fluo-4 NW Calcium Assay Kit | | C1272 SNARF®-1, acetoxymethyl ester, acetate | |
| I1223 indo-1, AM | | Cytosolic ROS | |
| F1221 fura-2, AM | | M36008 MitoSOX™ Red mitochondrial superoxide indicator | |
| F14201 fluo-4, AM | | I36007 Image-iT® LIVE Green Reactive Oxygen Species Detection Kit | |
| R1245MP rhod-2, AM | | A36003 APF | |
| Cytosolic Mg²⁺ | | C6827 CM-H ₂ DCFDA [ROS general] | |
| M14206 mag-fluo-4, AM | | D11347 dihydroethidium (hydroethidine) [superoxide] | |
| M1292 mag-fura-2, AM | | Cytosolic RNS | |
| Zn²⁺ | | A21285 anti-nitrotyrosine, rabbit IgG fraction | |
| F24195 FluoZin™-3, AM | | D23842 DAF-FM diacetate | |
| R36351 RhodZin™-3, AM | | | |

