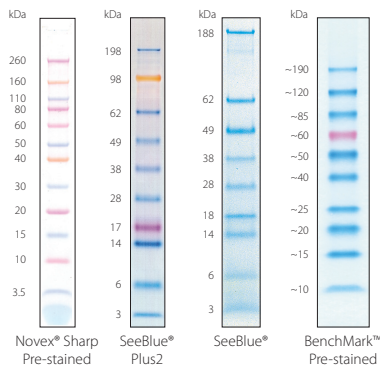


# Protein standards for electrophoresis

## Pre-stained protein standards for easy and clear band identification



Cat. no. **LC5800** **LC5925** **LC5625** **10748-010**

NuPAGE®  
4–12% Bis-Tris  
Gel w/ MES  
SDS buffer

NuPAGE®  
4–12% Bis-Tris  
Gel w/ MES  
SDS buffer

NuPAGE®  
4–12% Bis-Tris  
Gel w/ MES  
SDS buffer

Novex® 4–20%  
Tris Glycine Gel

NuPAGE® 3–8%  
Tris-Acetate Gel  
w/ Tris-acetate  
SDS buffer

NuPAGE® 4–12%  
Bis-Tris Gel w/ MES,  
stained with  
SimplyBlue™ SafeStain

NuPAGE® 4–12%  
Bis-Tris Gel w/ MES,  
stained with  
Coomassie® R-250

NuPAGE® 4–12%  
Bis-Tris Gel w/ MES,  
stained with  
Coomassie® R-250

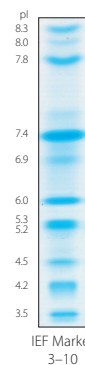
NuPAGE® 3–8%  
Tris-Acetate Gel  
w/ Tris-acetate  
SDS buffer stained  
with SimplyBlue™  
SafeStain

NuPAGE® Bis-Tris Gel,  
blotted to  
nitrocellulose,  
detected w/  
WesternBreeze®  
Chemiluminescent Kit

NuPAGE® 4–12%  
Bis-Tris Gel w/ MES,  
stained w/  
InVision™  
In-Gel His-tag  
Stain

NuPAGE® 4–12%  
Bis-Tris Gel w/ MES  
SDS buffer, blotted to  
nitrocellulose, detected  
w/ anti-His (C-term)  
antibody and  
WesternBreeze®  
Chemiluminescent Kit

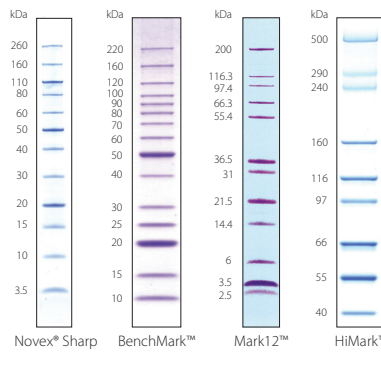
## IEF marker



39212-01

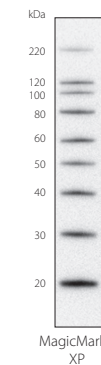
Novex®  
pH 3–10 IEF Gel  
visualized with  
UV transilluminator  
(2 sec exposure)

## Unstained protein standards for accurate molecular weight estimation



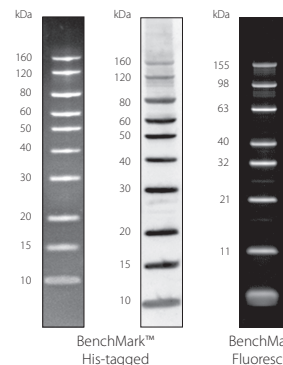
Cat. no. **LC5801** **10747-012** **LC5677**

## Protein standard for western blots\*



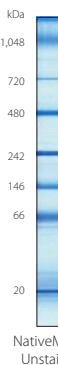
Cat. no. **LC5602**

## Specialty protein standards



Cat. no. **LC5606** **LC5928**

## Native marker



Cat. no. **LC0725**

NativePAGE™  
Novex® 4–16%  
Bis-Tris Gel

### \* Helpful tip for western blot analysis:

Combine 10 µl MagicMark™ XP Standard (LC5602) and 5 µl SeeBlue® Plus2 or SeeBlue® Pre-stained Standard (LC5925 or LC5625) in one lane. The bright blue SeeBlue® bands confirm gel run and transfer. Following immunodetection, the sharp bands of the MagicMark™ XP standard develop directly on the western blot.

See reverse side for protein standards selection guide

	Pre-stained protein standards				Unstained protein standards				Western blot protein standard	Specialty protein standards		IEF Marker	Native Marker
	Novex® Sharp Pre-stained	SeeBlue® Plus2/ SeeBlue®	BenchMark™ Pre-stained	HiMark™ Pre-stained HMW	Novex® Sharp Unstained	BenchMark™ Ladder	Mark12™ Unstained	HiMark™ HMW	MagicMark™ XP	BenchMark™ His-tagged	BenchMark™ Fluorescent	IEF Marker 3–10	Native-Mark™ Novex® Unstained
	LC5800	LC5925/LC5625	10748-010	LC5699	LC5801	10747-012	LC5677	LC5688	LC5602	LC5606	LC5928	39212-01	LC0725
SDS-PAGE	<b>Best</b>	Good	Tris-glycine only	NuPAGE® Tris-acetate and selected Tris-glycine gels	<b>Best</b>	Good	Good	NuPAGE® Tris-acetate only	Good	Good	Good	N/A	N/A
Western blot	<b>Best</b>	Good	Good	<b>Best</b> for large proteins	<b>Best</b>	Good	Good	Good	<b>Best</b>	Good for anti-His (C-term) antibody detection	Good	N/A	Good
Detection with UV transillumination	N/A	N/A	N/A	N/A	N/A	N/A	N/A	N/A	N/A	<b>Best</b> for InVision™ His-tag In-gel Stain	<b>Best</b>	N/A	N/A
Confirmation of epitope-tagged proteins	N/A	N/A	N/A	N/A	N/A	N/A	N/A	N/A	N/A	His-tagged	N/A	N/A	N/A
Immediate band identification	<b>Best</b>	Good	Good	Good	N/A	N/A	N/A	N/A	See helpful tip for western blot analysis on the reverse side	N/A	N/A	N/A	Good
Sharp bands	<b>Best</b>	Good	Good	Good	<b>Best</b>	<b>Best</b>	<b>Best</b>	<b>Best</b>	<b>Best</b>	Good	Good	Good	Good
MW estimation	<b>Best</b>	Good	Good	<b>Best</b> for large proteins	<b>Best</b>	<b>Best</b>	<b>Best</b>	<b>Best</b>	<b>Best</b>	<b>Best</b>	Good	N/A	<b>Best</b> for native proteins
Monitoring of migration during electrophoresis	<b>Best</b>	Good	Good	Good	N/A	N/A	N/A	N/A	See helpful tip for western blot analysis on the reverse side	N/A	N/A	N/A	N/A
Silver staining	Good	Good	Good	Good	<b>Best</b>	<b>Best</b>	<b>Best</b>	<b>Best</b>	Good	Good	N/A	Good	Good
MW/pI range	3.5–260 kDa‡	4–250 kDa‡	~10–190 kDa	31–460 kDa‡	3.5–260 kDa	10–220 kDa	2.5–200 kDa	40–500 kDa	20–200 kDa	10–160 kDa	11–155 kDa‡	pI 3.5–10.7	20–1,230 kDa‡
IEF gel	N/A	N/A	N/A	N/A	N/A	N/A	N/A	N/A	N/A	N/A	N/A	<b>Best</b>	N/A



‡ Apparent molecular weight values vary, depending on the electrophoresis gel/buffer system. For more information, visit [www.invitrogen.com/proteomics](http://www.invitrogen.com/proteomics) or refer to product manuals.  
N/A = Not applicable.



[www.invitrogen.com](http://www.invitrogen.com)