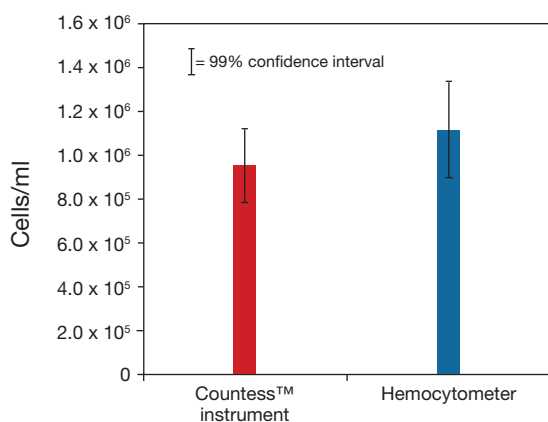
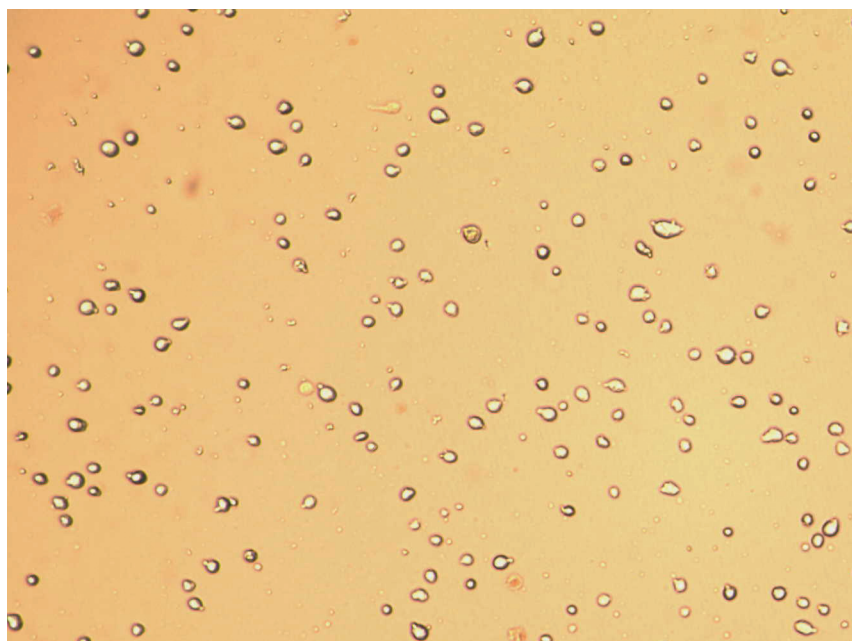
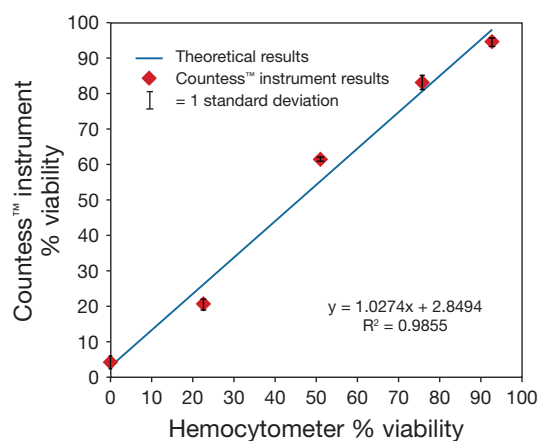


<b>Cell type</b>	Human Aortic Smooth Muscle Cells (HASMC)
<b>Vendor no.</b>	Invitrogen C-007-5C
<b>Species</b>	Human
<b>Tissue</b>	Smooth muscle
<b>Type of cell line</b>	Adherent
<b>Average cell size</b>	20 µm
<b>Special notes</b>	Irregularly shaped cells; aggregate easily.



Counting comparison.



Countess™ Automated Cell Counter vs. hemocytometer.