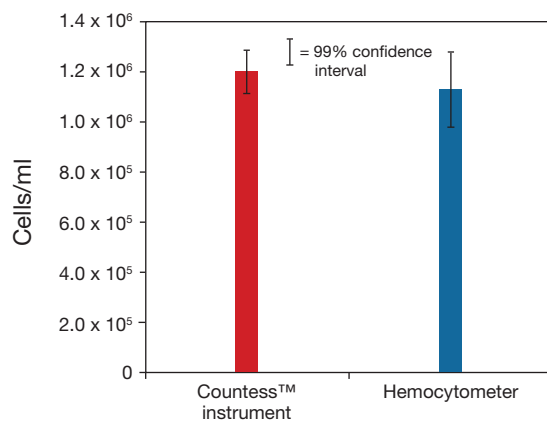
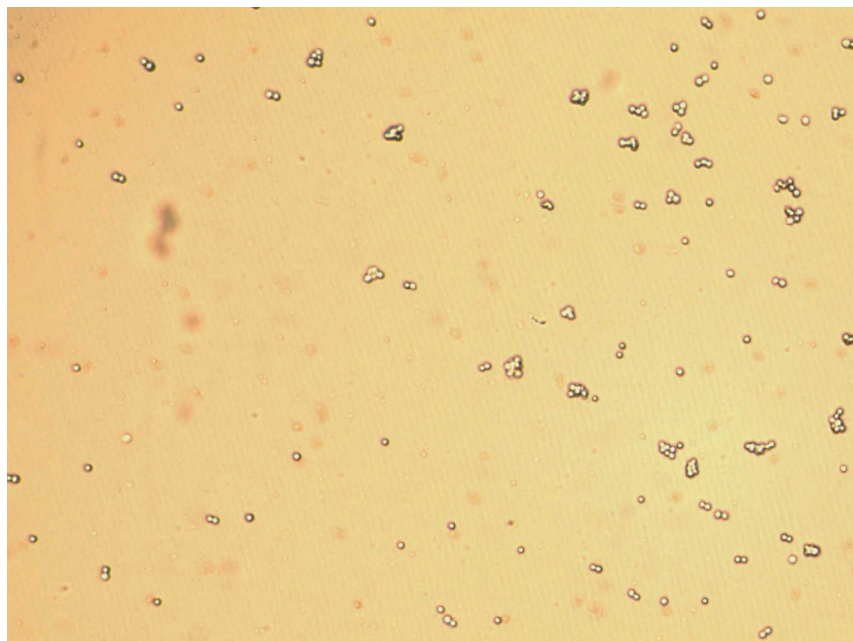


Cell type	CHSE-214
Vendor no.	ATCC CRL-1681
Species	Chinook salmon
Tissue	Embryo
Type of cell line	Adherent
Average cell size	16–17 μm
Special notes	Cells are very sensitive



Viability data coming

Counting comparison.

Countess™ Automated Cell Counter vs. hemocytometer.