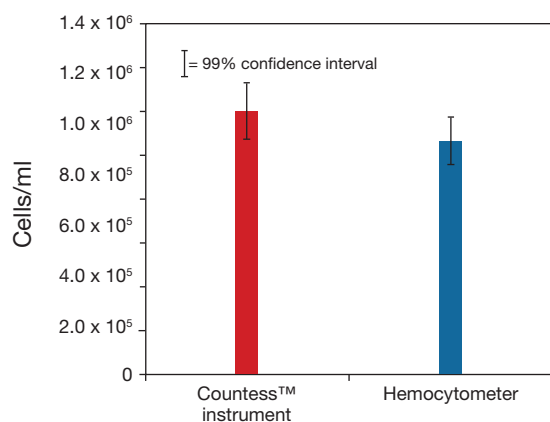
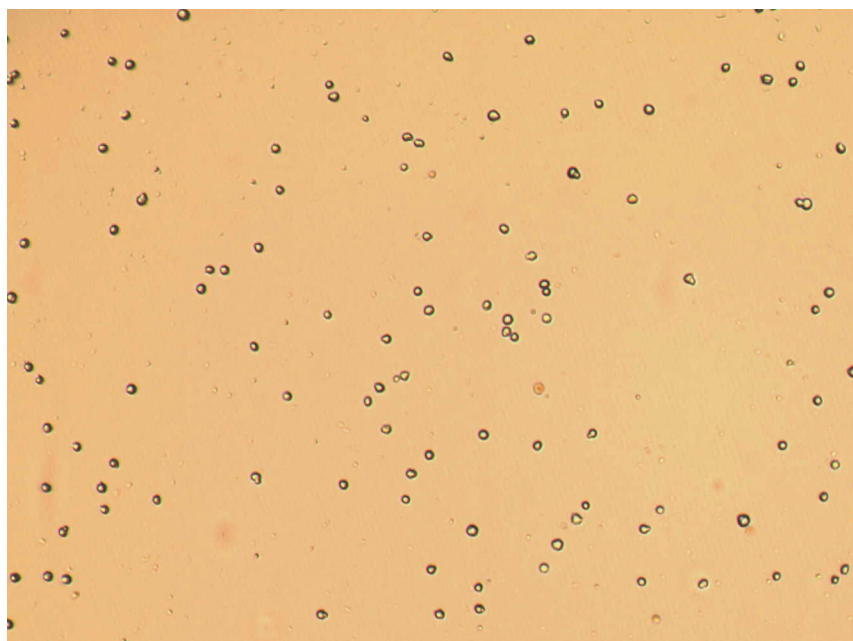
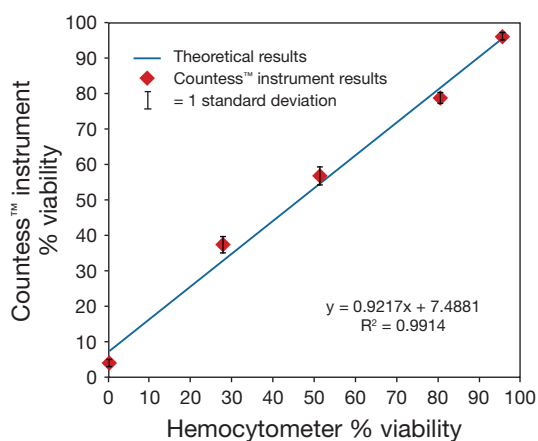


Cell type	Human Pulmonary Artery Endothelial Cells (HPAEC)
Vendor no.	Invitrogen C-008-5C
Species	Human
Tissue	Artery endothelial (blood vessel)
Type of cell line	Primary adherent
Average cell size	13 μm
Special notes	Irregularly shaped cells, some very large; aggregate easily in solution



Counting comparison.



Countess™ Automated Cell Counter vs. hemocytometer.