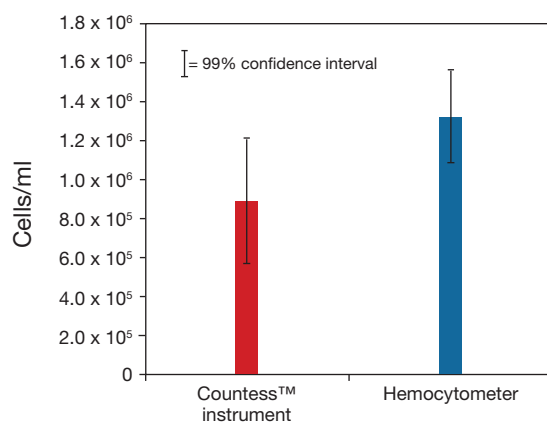
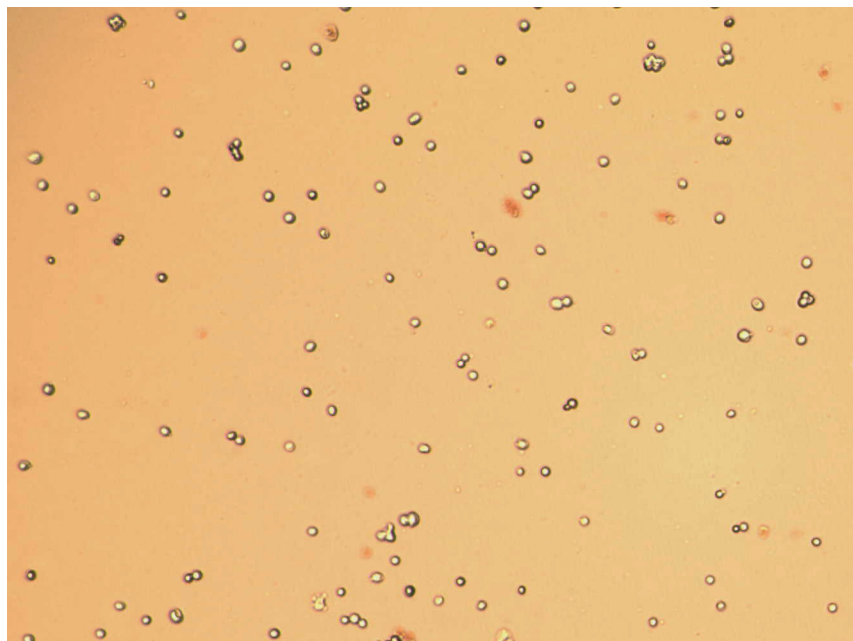


## HepG2/C3A

Cell type	HepG2/C3A
Vendor no.	ATCC CRL-10741
Species	Human
Tissue	Liver
Type of cell line	Immortalized adherent
Average cell size	18 µm
Special notes	Cells are very sensitive



Viability data coming

Counting comparison.

Countess™ Automated Cell Counter vs. hemocytometer.