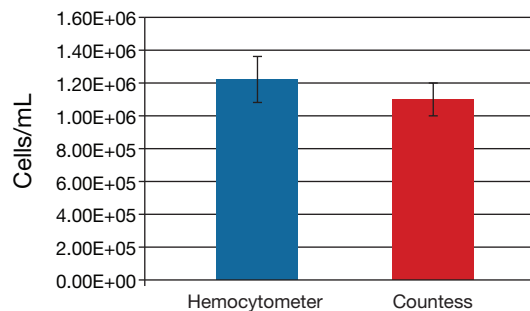
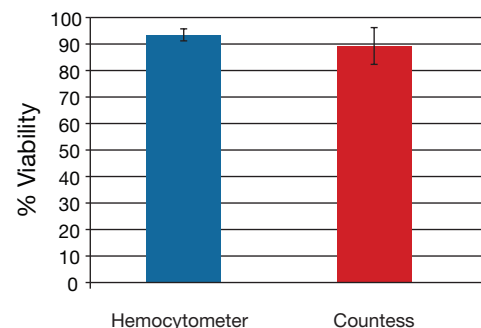


<b>Cell type</b>	Human epidermal keratinocytes, neonatal
<b>Vendor no.</b>	Invitrogen C-001-5C
<b>Species</b>	Human
<b>Tissue</b>	Neonatal foreskin
<b>Type of cell line</b>	Primary
<b>Average cell size</b>	12.5 µm
<b>Special notes</b>	Grown in EpiLife® medium (GIBCO® MEPI500CA) + EDGS (GIBCO® S0125)



Counting comparison.

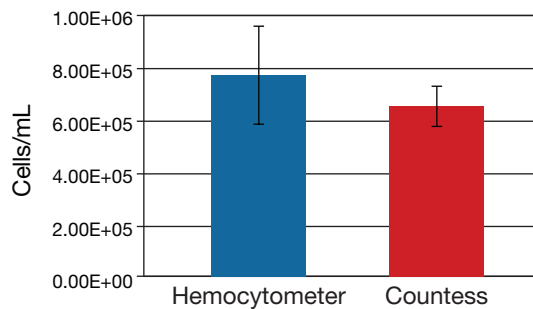
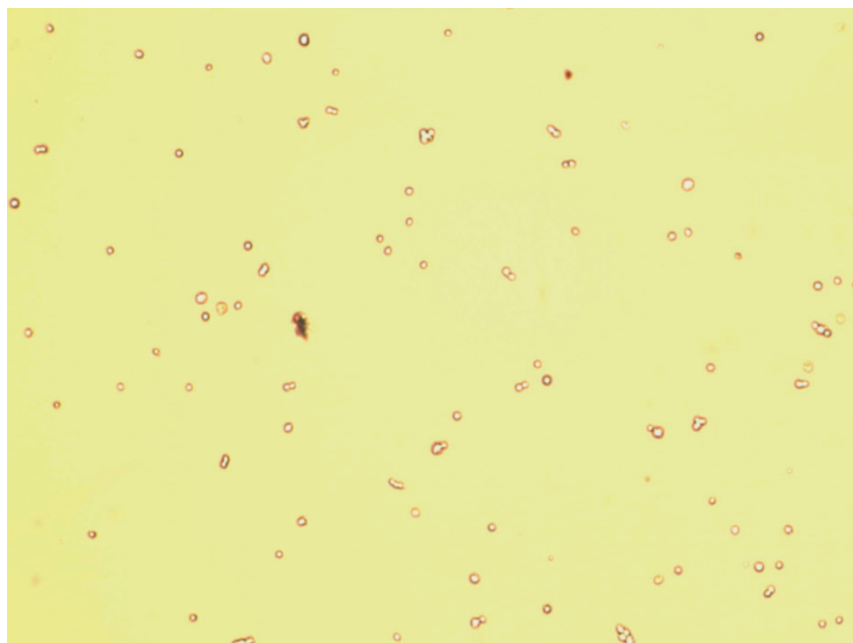


Viability count comparison.

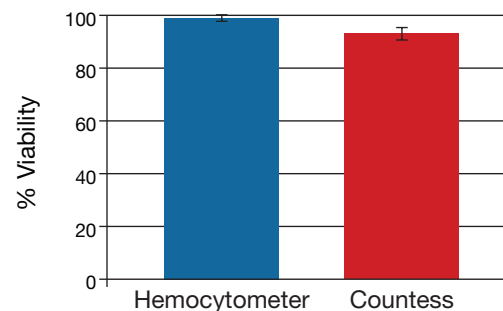
Error bars are 1 standard deviation.

For research use only. Not intended for human or animal therapeutic or diagnostic use.

<b>Cell type</b>	Human dermal fibroblasts, neonatal
<b>Vendor no.</b>	Invitrogen C-004-5C
<b>Species</b>	Human
<b>Tissue</b>	Neonatal foreskin
<b>Type of cell line</b>	Primary
<b>Average cell size</b>	17 µm
<b>Special notes</b>	Grown in DMEM w/GlutaMAX™ (GIBCO® 10569) + 10% FBS (GIBCO® 16000)



Counting comparison.



Viability count comparison.

Error bars are 1 standard deviation.

For research use only. Not intended for human or animal therapeutic or diagnostic use.