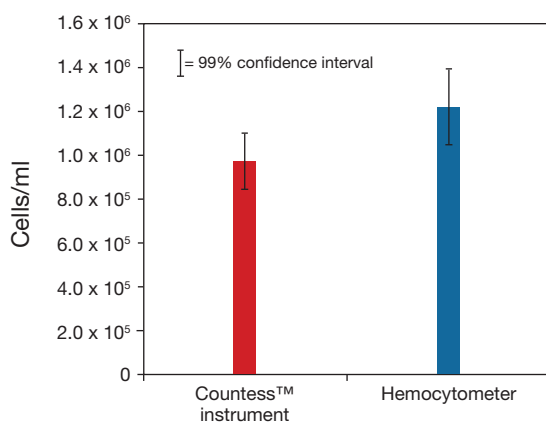
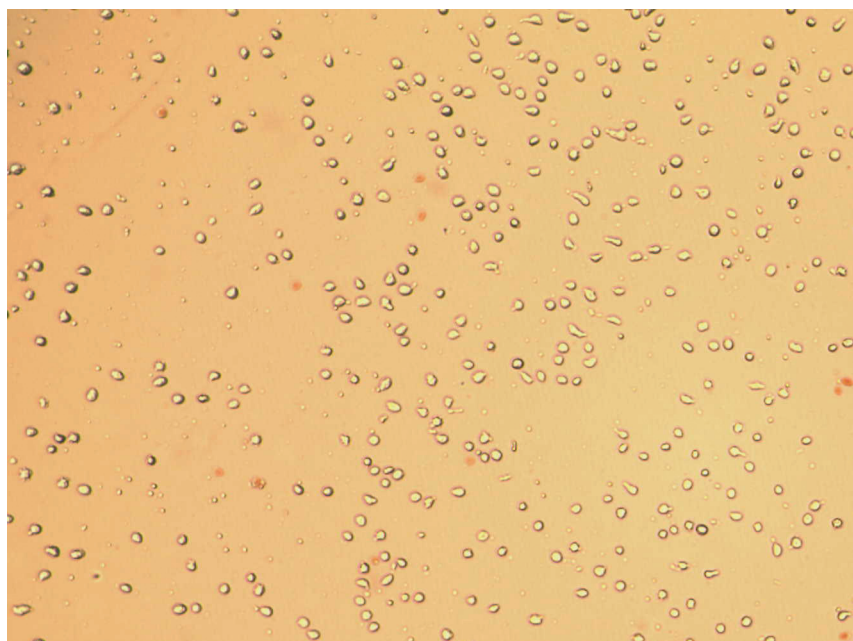
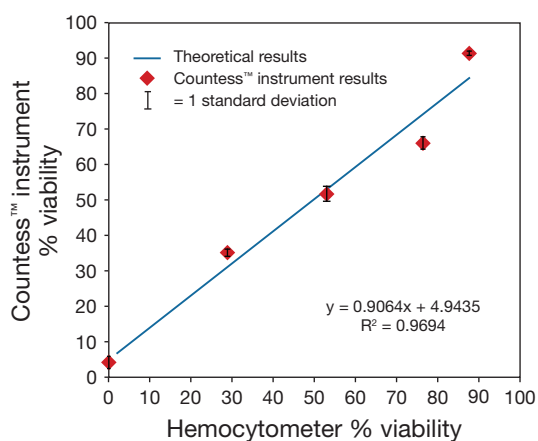


Cell type	NIH/3T3
Vendor no.	ATCC CRL-1658
Species	Mouse
Tissue	Embryo
Type of cell line	Immortalized
Average cell size	18 µm
Special notes	Irregularly sized cells, many very small, may be difficult to count



Counting comparison.



Countess™ Automated Cell Counter vs. hemocytometer.