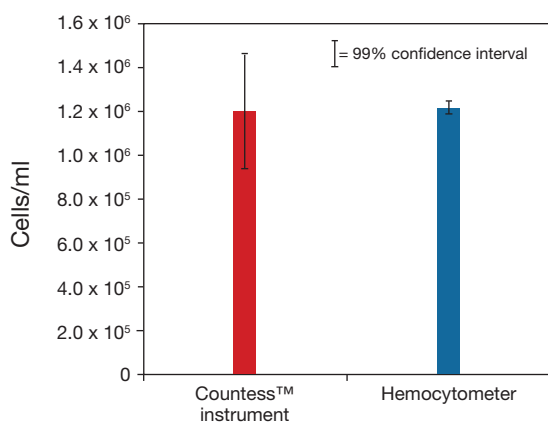
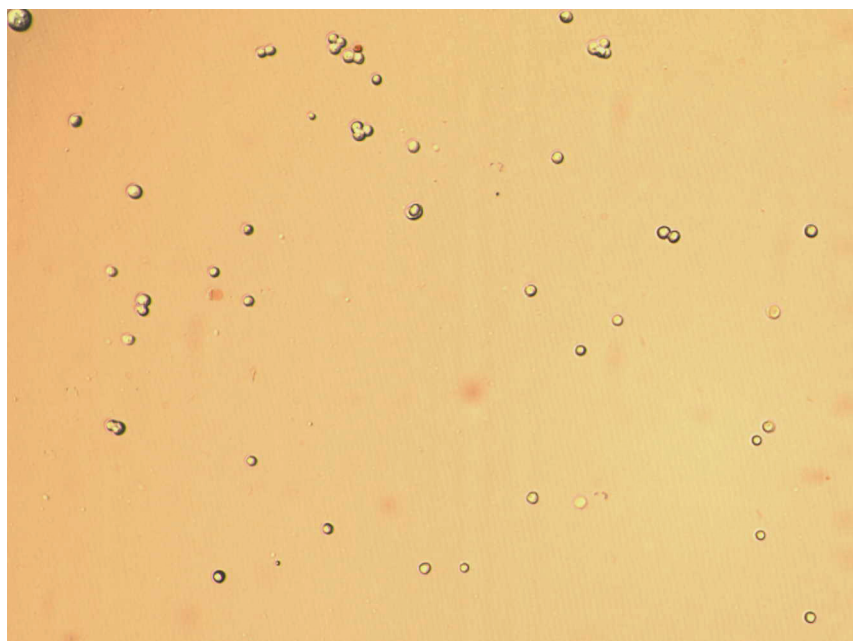
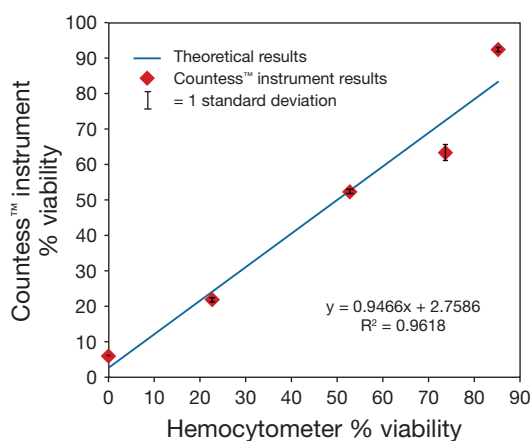


Human Genomic DNA (MCF7)

Cell type	Human Genomic DNA (MCF7)
Vendor no.	ATCC HTB-22
Species	Human
Tissue	Mammary (breast)
Type of cell line	Immortalized adherent
Average cell size	20–24 μm
Special notes	May be troublesome, cells are light, don't contrast easily on screen



Counting comparison.



Countess™ Automated Cell Counter vs. hemocytometer.