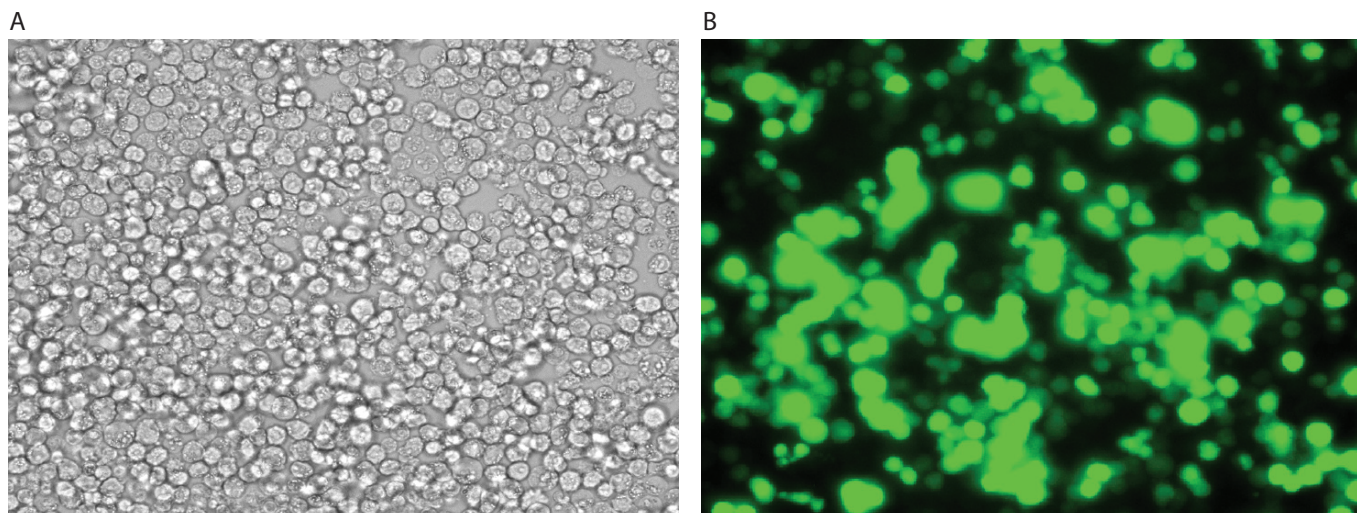


BW5147 (T200-A)5.2



BW5147 cells were transfected using the Neon™ transfection system and 0.5 µg of a plasmid encoding the EGFP. 24 hours post transfection, the cells were analyzed by light (A) and fluorescence microscopy (B).

Electroporation parameters

Pulse voltage (v)	Pulse width (ms)	Pulse number	Cell density (cells/ml)	Transfection efficiency	Viability	Tip type
1,400	20	2	7 x 10 ⁶	51%	89%	10 µl
1,400	30	1	7 x 10 ⁶	47%	69%	10 µl
1,400	20	2	7 x 10 ⁶	56%	96%	100 µl

Cell information

Cell type/description	BW5147 (T200-A)5.2/cell line
Characteristics/species	Suspension/mouse
Tissue origin	Blood
Media	Dulbecco's Modified Eagle's Medium (DMEM), with 4 mM L-glutamine adjusted to contain 1.5 g/L sodium bicarbonate and 4.5 g/L glucose (90%); 10% heat-inactivated horse serum
Morphology	Lymphoblast
Double time	—
Subculturing	Medium renewal: every 2 to 3 days
Culture condition	Temperature: 37°C; atmosphere: air, 95%; carbon dioxide (CO ₂), 5%