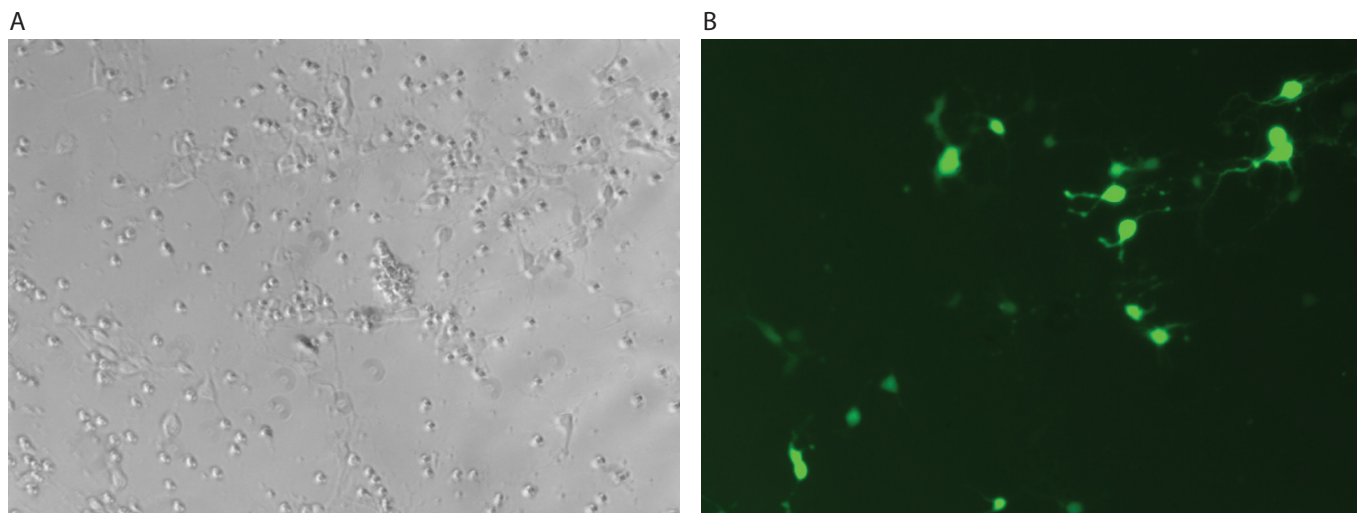


Primary Rat Hippocampal



Primary Rat Hippocampal cells were transfected using the Neon™ transfection system and 0.5 µg of a plasmid encoding the EGFP. 72 hours post transfection, the cells were analyzed by light (A) and fluorescence microscopy (B).

Electroporation parameters

Pulse voltage (v)	Pulse width (ms)	Pulse number	Cell density (cells/ml)	Transfection efficiency	Viability	Tip type
1,700	20	1	1 x 10 ⁷	37%	77%	10 µl
1,600	10	3	1 x 10 ⁷	34%	77%	10 µl

Cell information

Cell type/description	Primary Rat Hippocampal/primary cells
Characteristics/species	Adherent/rat
Tissue origin	Day 18 embryonic Sprague/Dawley rat brain, hippocampal
Media	Neurobasal medium supplemented with B27 serum-free supplement and GlutaMAX™
Morphology	Neurospheres, terminally differentiated neurons
Double time	—
Subculturing	Medium renewal: every 2 to 3 days
Culture condition	Temperature: 37°C; atmosphere: air, 95%; carbon dioxide (CO ₂), 5%