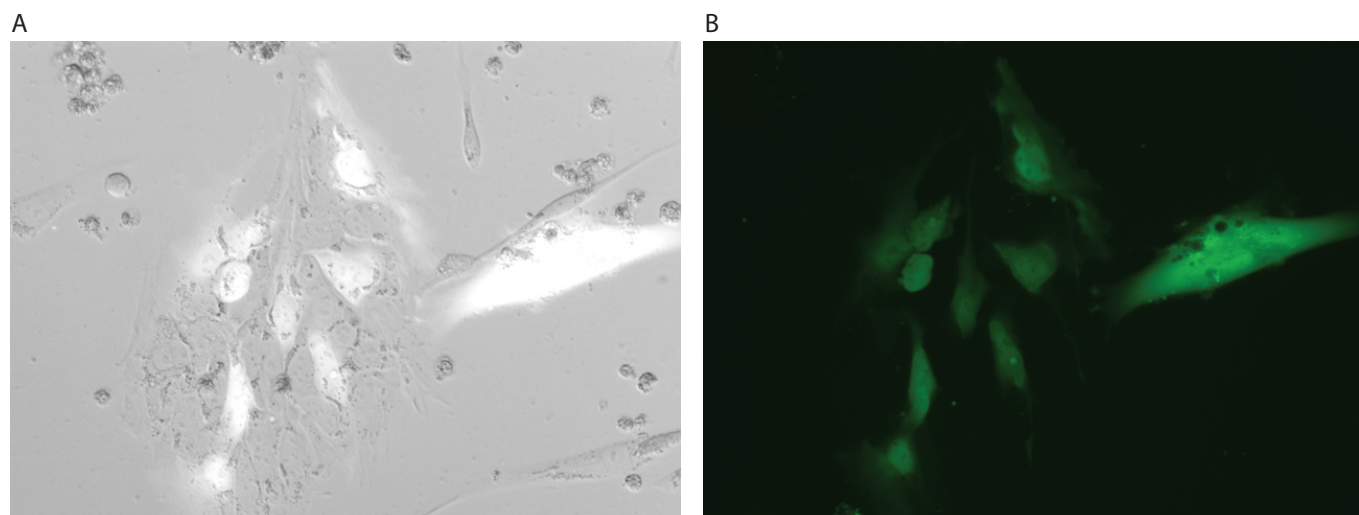


BGO1V Human Embryonic Stem Cells



BGO1V Human Embryonic Stem Cells were transfected using the Neon[™] transfection system and 0.5 µg of a plasmid encoding the EGFP. 48 hours post transfection, the cells were analyzed by light (A) and fluorescence microscopy (B).

Electroporation parameters

Pulse voltage (v)	Pulse width (ms)	Pulse number	Cell density (cells/ml)	Transfection efficiency	Viability	Tip type
1,200	30	1	1 x 10 ⁷	33%	92%	10 µl
1,200	20	2	1 x 10 ⁷	21%	90%	10 µl

Cell information

Cell type/description	BGO1V Human Embryonic Stem Cells/primary cells
Characteristics/species	Adherent, adapted for feeder-free growth/human
Tissue origin	Blastocyst
Media	Dulbecco's Modified Eagle's Medium (DMEM)/F12 medium supplemented with 2 mM L-glutamine, 20% Knock-out Serum Replacement, 1X MEM Non-Essential Amino Acids Solution, 0.1 mM β-mercaptoethanol, and 4 ng/ml bGFG
Morphology	Spherical, colony
Double time	—
Subculturing	Medium renewal: daily after first 48 hr; passage 1:3–1:6
Culture condition	Temperature: 37°C; atmosphere: air, 95%; carbon dioxide (CO ₂), 5%