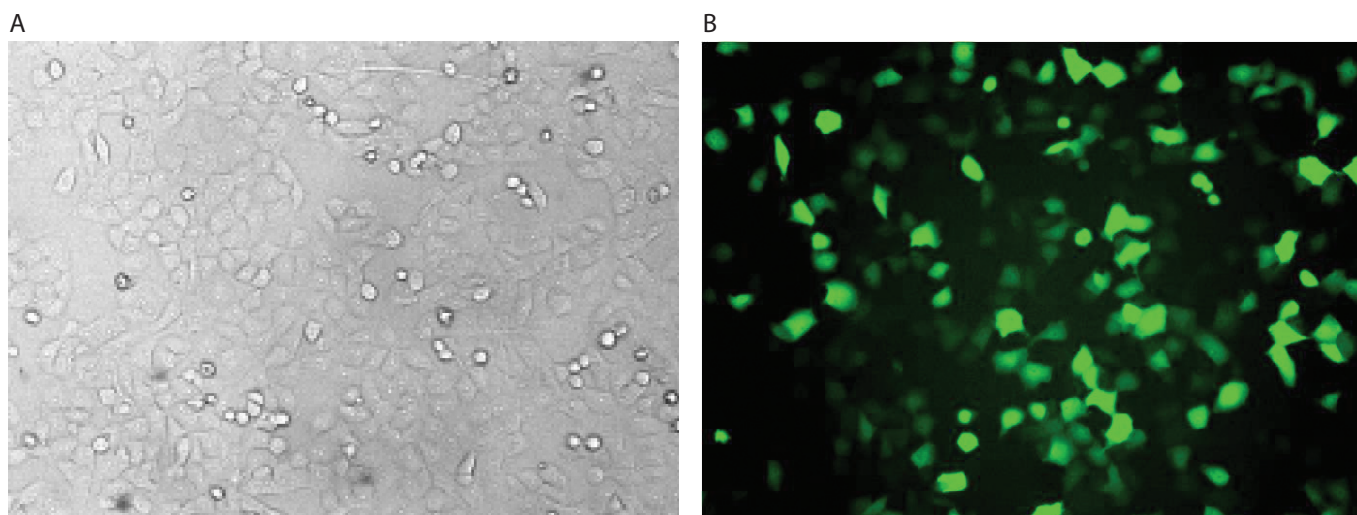


**MCF-ADR**



MCF-ADR cells were transfected using the Neon™ transfection system and 0.5 µg of a plasmid encoding the EGFP. 24 hours post transfection, the cells were analyzed by light (A) and fluorescence microscopy (B).

**Electroporation parameters**

Pulse voltage (v)	Pulse width (ms)	Pulse number	Cell density (cells/ml)	Transfection efficiency	Viability	Tip type
1,500	4	4	5 x 10 <sup>6</sup>	65%	90%	10 µl
1,500	5	4	5 x 10 <sup>6</sup>	63%	85%	10 µl

**Cell information**

Cell type/description	MCF-ADR (adriamycin-resistant breast cancer)/cell line
Characteristics/species	Adherent/human
Tissue origin	Breast
Media	RPMI 1640 with L-glutamine; 10% FBS
Morphology	Epithelial
Double time	—
Subculturing	Medium renewal: every 2 to 3 days
Culture condition	Temperature: 37°C; atmosphere: air, 95%; carbon dioxide (CO <sub>2</sub> ), 5%