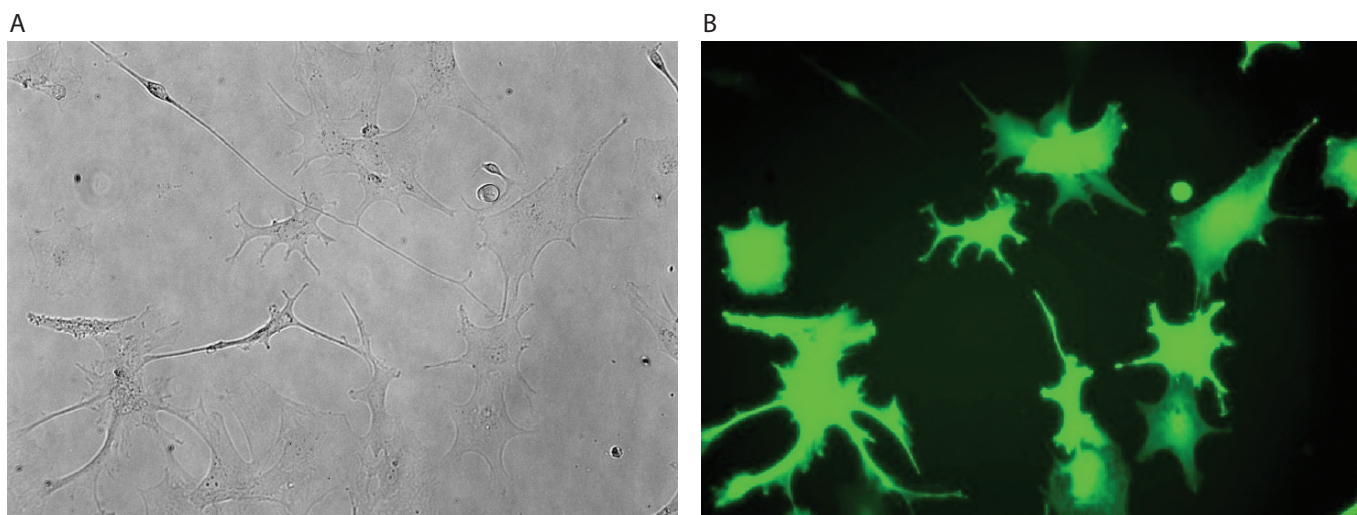


Astrocyte



Astrocyte cells were transfected using the Neon™ transfection system and 0.5 µg of a plasmid encoding the EGFP. 24 hours post transfection, the cells were analyzed by light (A) and fluorescence microscopy (B).

Electroporation parameters

Pulse voltage (v)	Pulse width (ms)	Pulse number	Cell density (cells/ml)	Transfection efficiency	Viability	Analysis time	Tip type
1,300	20	2	1 x 10 ⁶	76%	88%	48 hr	10 µl

Cell information

Cell type/description	Hippocampal/primary cell
Characteristics/species	Adherent/rat
Tissue origin	Brain neuron
Media	Astrocyte basal medium, insulin, rhEGF, ascorbic acid, and L-glutamine; 3% FBS
Morphology	—
Double time	2 weeks (change new media after 4–5 days)
Subculturing	Medium renewal: every 2 to 3 days
Culture condition	Temperature: 37°C; atmosphere: air, 95%; carbon dioxide (CO ₂), 5%