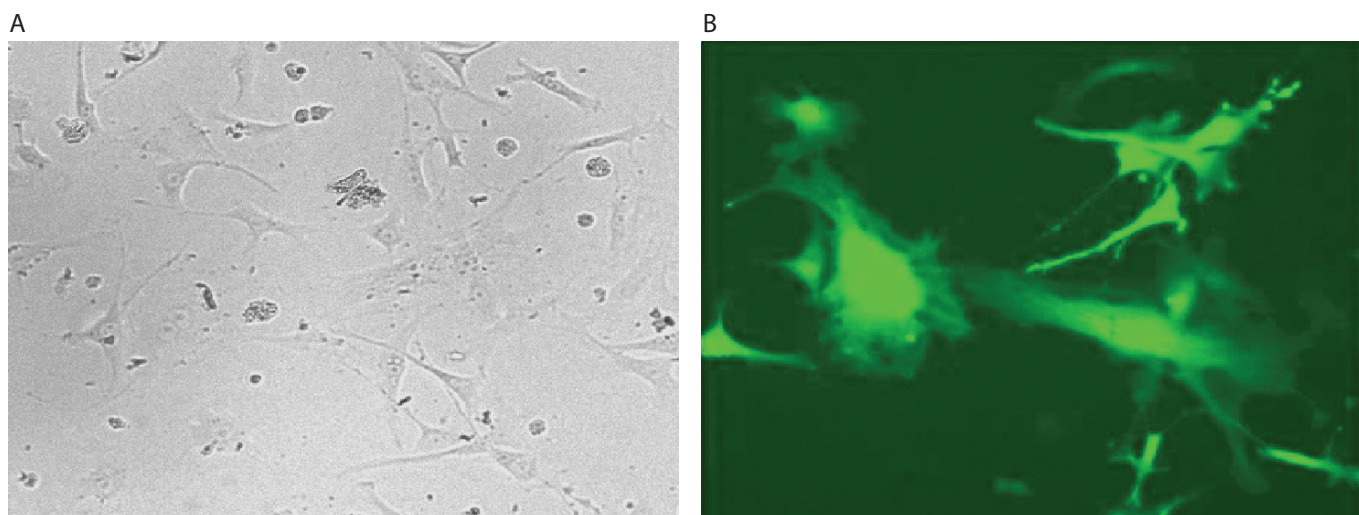


## Mouse embryonic fibroblasts (MEF)



MEF embryonic fibroblast cells were transfected using the Neon<sup>™</sup> transfection system and 0.5 µg of a plasmid encoding the EGFP. 24 hours post transfection, the cells were analyzed by light (A) and fluorescence microscopy (B).

### Electroporation parameters

Pulse voltage (v)	Pulse width (ms)	Pulse number	Cell density (cells/ml)	Transfection efficiency	Viability	Tip type
1,350	30	1	5 x 10 <sup>6</sup>	80%	75%	10 µl
1,650	20	1	5 x 10 <sup>6</sup>	80%	70%	10 µl

### Cell information

Cell type/description	Embryonic fibroblast/primary cell
Characteristics/species	Adherent/mouse
Tissue origin	Embryo
Media	Dulbecco's Modified Eagle's Medium (DMEM), with 4,500 mg/L D-glucose, L-glutamine, and 110 mg/L sodium pyruvate; 10% FBS
Morphology	Fibroblast
Double time	—
Subculturing	Medium renewal: every 2 to 3 days
Culture condition	Temperature: 37°C; atmosphere: air, 95%; carbon dioxide (CO <sub>2</sub> ), 5%