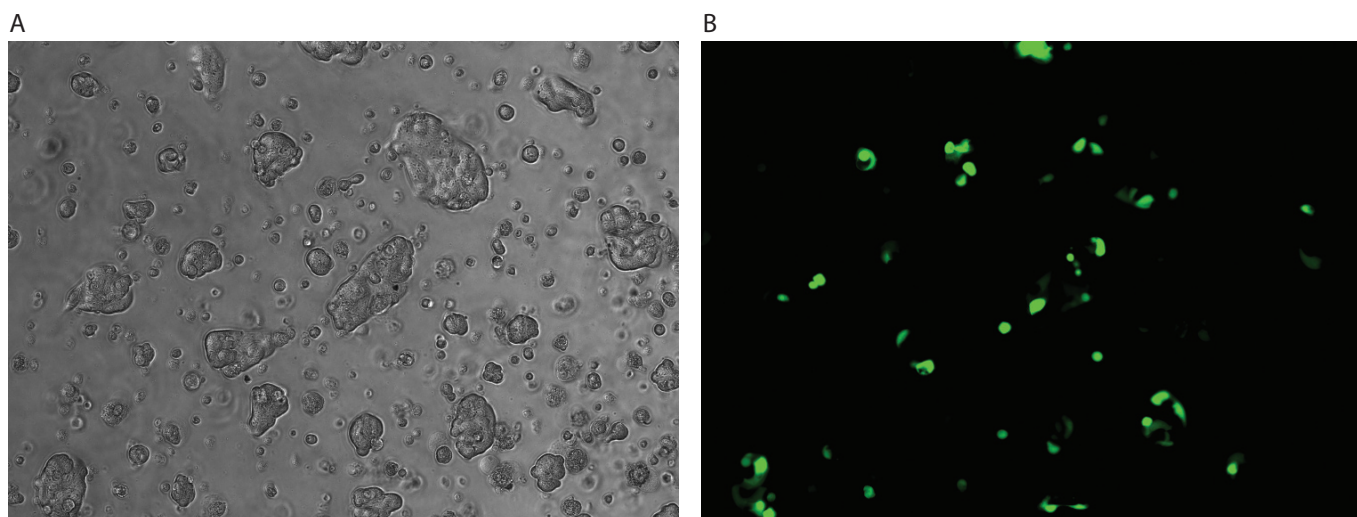


Calu-3



Calu-3 cells were transfected using the Neon™ transfection system and 0.5 µg of a plasmid encoding the EGFP. 24 hours post transfection, the cells were analyzed by light (A) and fluorescence microscopy (B).

Electroporation parameters

Pulse voltage (v)	Pulse width (ms)	Pulse number	Cell density (cells/ml)	Transfection efficiency	Viability	Tip type
1,400	20	2	1 x 10 ⁷	42%	60%	10 µl
1,400	20	2	1 x 10 ⁷	40%	73%	10 µl
1,400	20	2	1 x 10 ⁷	40%	73%	100 µl

Cell information

Cell type/description	Calu-3/cell line
Characteristics/species	Adherent/human
Tissue origin	Lung
Media	Eagle's Minimum Essential Medium (EMEM) with 2 mM L-glutamine adjusted to contain 1.5 g/L sodium bicarbonate, 1.0 mM sodium pyruvate, and 0.1 mM nonessential amino acids (90%); 10% FBS
Morphology	Epithelial
Double time	—
Subculturing	Medium renewal: every 2 to 3 days
Culture condition	Temperature: 37°C; atmosphere: air, 95%; carbon dioxide (CO ₂), 5%