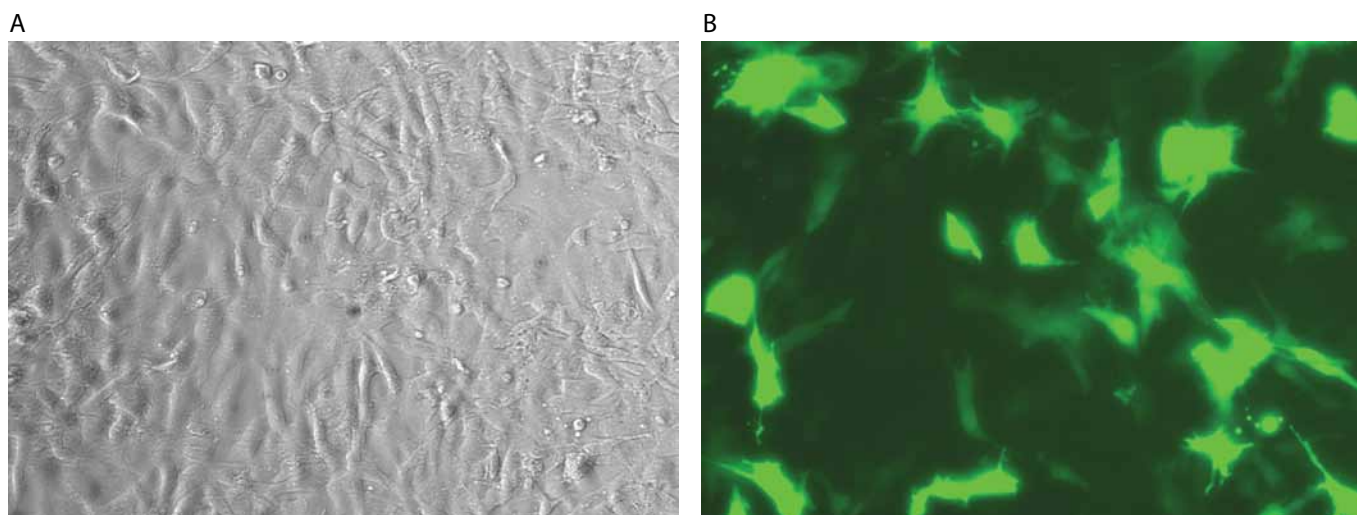


Rat cardiomyocytes microporation



Rat cardiomyocytes were transfected using the MicroPorator and 0.5 µg of a plasmid encoding EGFP. 48 hours post-microporation, the cells were analyzed by light (A) and fluorescence microscopy (B).

Electroporation parameters

Pulse voltage (v)	Pulse width (ms)	Pulse number	Cell density (cells/mL)	Transfection efficiency	Viability	Tip type
1,700	20	1	1 x 10 ⁷	66%	93%	10 µL
1,600	10	3	1 x 10 ⁷	55%	93%	10 µL
1,400	20	2	1 x 10 ⁷	55%	93%	10 µL

Cell information

Cell type/Description	Rat cardiomyocytes/Primary cell (muscle)
Characteristics/Species	Adherent/Rat
Tissue origin	Neonatal rat heart tissue
Media	Cardiac Myocyte Media (ScienCell Research Labs)
Morphology	Epithelial
Doubling time	2–3 days
Subculturing	Change media every 2 days
Culture conditions	Temperature 37°C, atmosphere: air, 95% carbon dioxide (CO ₂) 5%