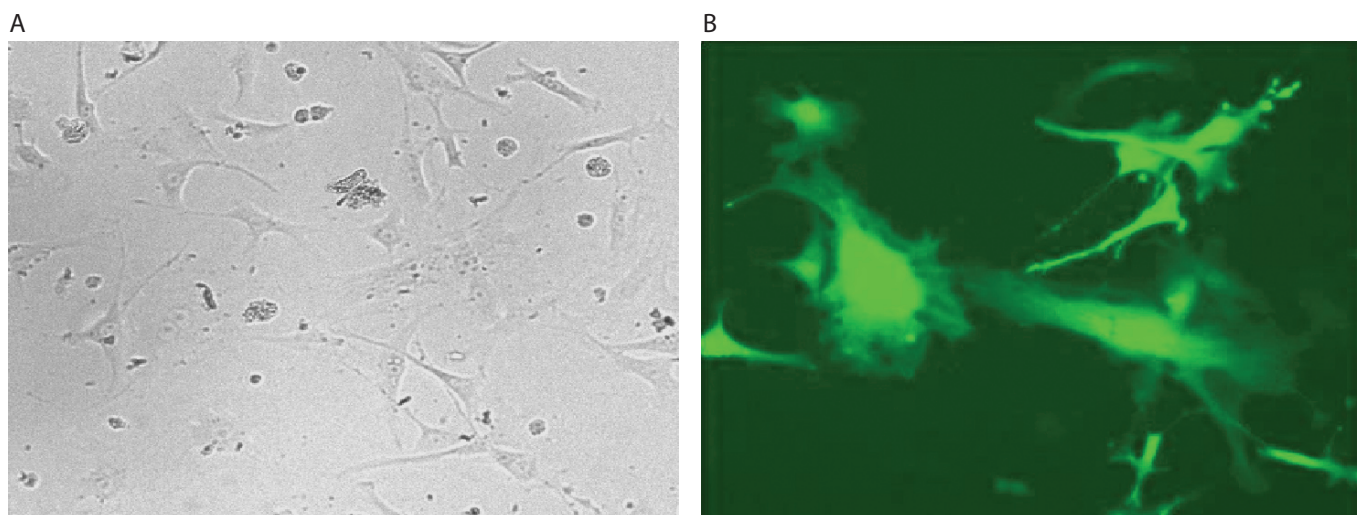


Mouse embryonic fibroblasts (MEF)



MEF embryonic fibroblast cells were transfected using the Neon[™] transfection system and 0.5 µg of a plasmid encoding the EGFP. 24 hours post transfection, the cells were analyzed by light (A) and fluorescence microscopy (B).

Electroporation parameters

Pulse voltage (v)	Pulse width (ms)	Pulse number	Cell density (cells/ml)	Transfection efficiency	Viability	Tip type
1,350	30	1	5 x 10 ⁶	80%	75%	10 µl
1,650	20	1	5 x 10 ⁶	80%	70%	10 µl

Cell information

Cell type/description	Embryonic fibroblast/primary cell
Characteristics/species	Adherent/mouse
Tissue origin	Embryo
Media	Dulbecco's Modified Eagle's Medium (DMEM), with 4,500 mg/L D-glucose, L-glutamine, and 110 mg/L sodium pyruvate; 10% FBS
Morphology	Fibroblast
Double time	—
Subculturing	Medium renewal: every 2 to 3 days
Culture condition	Temperature: 37°C; atmosphere: air, 95%; carbon dioxide (CO ₂), 5%