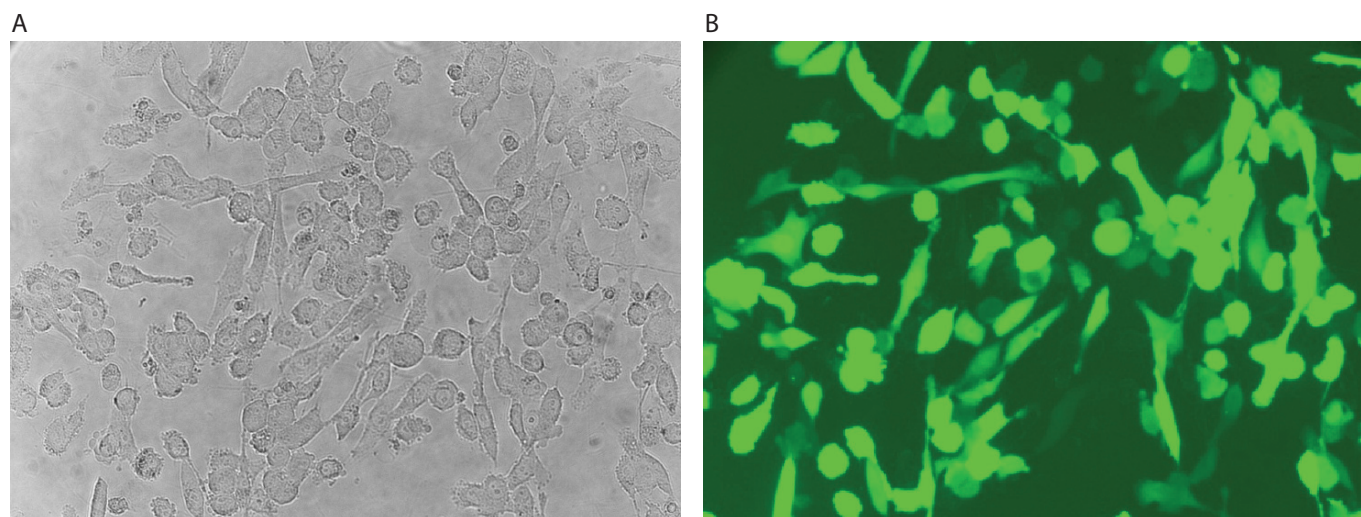


**SK-Hep-1**



SK-Hep-1 cells were transfected using the Neon™ transfection system and 0.5 µg of a plasmid encoding the EGFP. 24 hours post transfection, the cells were analyzed by light (A) and fluorescence microscopy (B).

**Electroporation parameters**

Pulse voltage (v)	Pulse width (ms)	Pulse number	Cell density (cells/ml)	Transfection efficiency	Viability	Tip type
870	35	2	5 x 10 <sup>6</sup>	86%	80%	10 µl

**Cell information**

Cell type/description	SK-Hep-1 (hepatocellular carcinoma)/cell line
Characteristics/species	Adherent/human
Tissue origin	Liver
Media	Dulbecco's Modified Eagle's Medium (DMEM), with 4,500 mg/L D-glucose, L-glutamine, and 110 mg/L sodium pyruvate; 10% FBS
Morphology	Epithelial
Double time	—
Subculturing	Medium renewal: every 2 to 3 days
Culture condition	Temperature: 37°C; atmosphere: air, 95%; carbon dioxide (CO <sub>2</sub> ), 5%