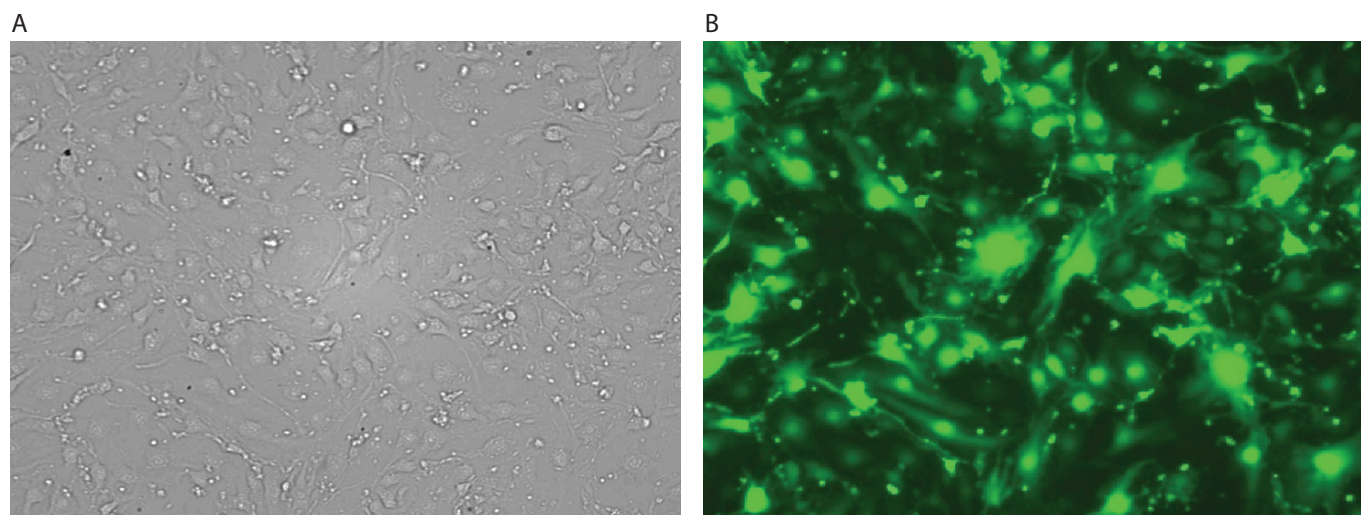


**b-END.3**



b-END.3 cells were transfected using the Neon™ transfection system and 0.5 µg of a plasmid encoding the EGFP. 48 hours post transfection, the cells were analyzed by light (A) and fluorescence microscopy (B).

**Electroporation parameters**

Pulse voltage (v)	Pulse width (ms)	Pulse number	Cell density (cells/ml)	Transfection efficiency	Viability	Tip type
1,700	20	1	7.6 x 10 <sup>6</sup>	68%	72%	10 µl
1,300	20	2	7.6 x 10 <sup>6</sup>	73%	89%	10 µl
1,450	20	2	7.6 x 10 <sup>6</sup>	57%	98%	100 µl

**Cell information**

Cell type/description	b-END.3/cell line
Characteristics/species	Adherent/mouse
Tissue origin	Brain
Media	Dulbecco's Modified Eagle's Medium (DMEM), with 4 mM L-glutamine, 1.5 g/L Na-bicarbonate, and 4.5 g/L glucose; 10% FBS
Morphology	Endothelial
Double time	—
Subculturing	Medium renewal: every 2 to 3 days
Culture condition	Temperature: 37°C; atmosphere: air, 95%; carbon dioxide (CO <sub>2</sub> ), 5%