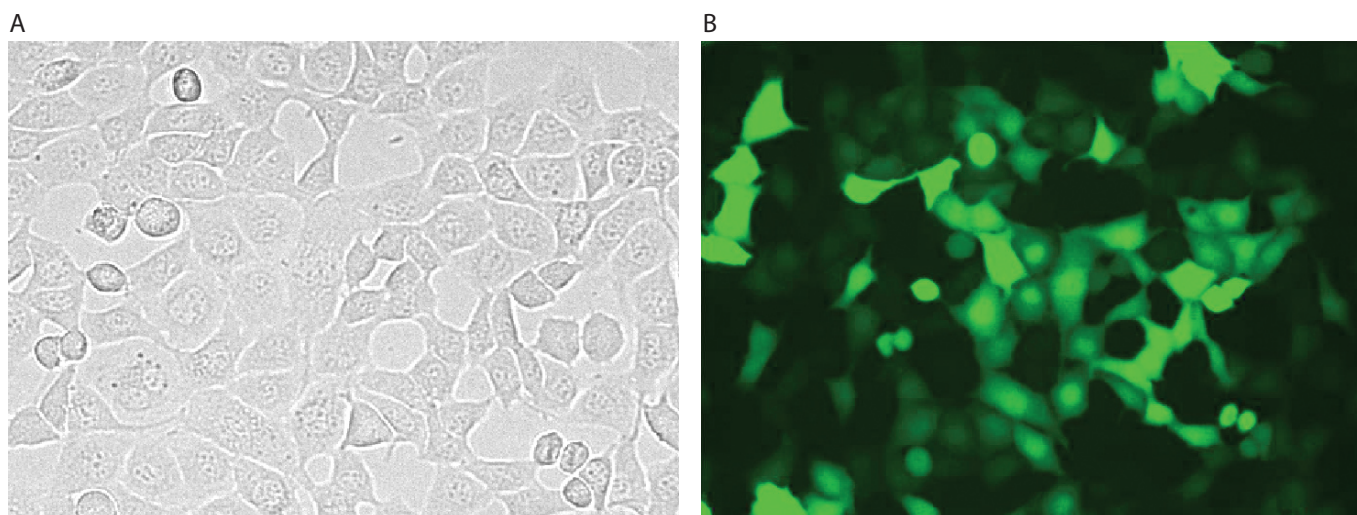


CHO-K1



CHO-K1 cells were transfected using the Neon™ transfection system and 0.5 µg of a plasmid encoding the EGFP. 24 hours post transfection, the cells were analyzed by light (A) and fluorescence microscopy (B).

Electroporation parameters

Pulse voltage (v)	Pulse width (ms)	Pulse number	Cell density (cells/ml)	Transfection efficiency	Viability	Tip type
1,560	5	10	5 x 10 ⁶	90%	93%	10 µl
1,650	10	3	5 x 10 ⁶	88%	91%	10 µl
1,620	10	3	5 x 10 ⁶	91%	92%	100 µl

Cell information

Cell type/description	CHO-K1/cell line
Characteristics/species	Adherent/hamster
Tissue origin	Ovary
Media	Dulbecco's Modified Eagle's Medium (DMEM), with 4,500 mg/L D-glucose, L-glutamine, and 110 mg/L sodium pyruvate; 10% FBS
Morphology	Epithelial
Double time	About 26 hr
Subculturing	Medium renewal: every 2 to 3 days
Culture condition	Temperature: 37°C; atmosphere: air, 95%; carbon dioxide (CO ₂), 5%