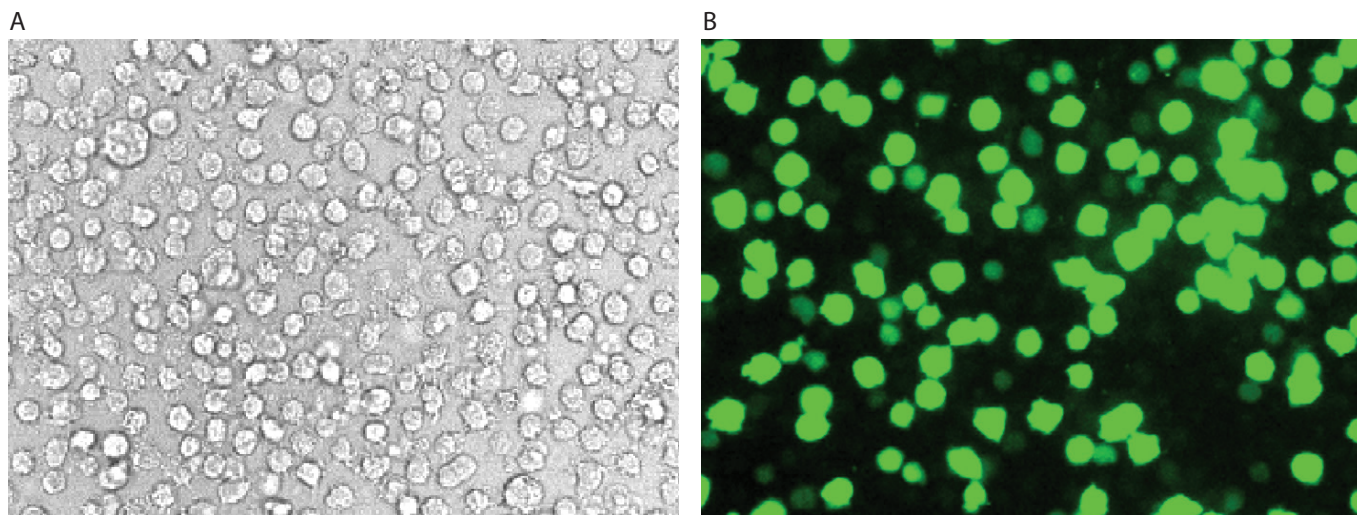


Dendritic



Dendritic cells were transfected using the Neon™ transfection system and 0.5 µg of a plasmid encoding the EGFP. 24 hours post transfection, the cells were analyzed by light (A) and fluorescence microscopy (B).

Electroporation parameters

Pulse voltage (v)	Pulse width (ms)	Pulse number	Cell density (cells/ml)	Transfection efficiency	Viability	Tip type
1,500	30	1	5 x 10 ⁶	50%	70%	10 µl

Cell information

Cell type/description	Dendritic (immune cells)/primary cell
Characteristics/species	Suspension/human
Tissue origin	Blood
Media	RPMI 1640 with L-glutamine, IL-4 (1,000 units/ml), GM-CSF (1,000 units/ml); 10% FBS
Morphology	Loosely adherent or non-adherent cells of irregular shape with dendrites
Double time	—
Subculturing	Medium renewal: every 2 to 3 days
Culture condition	Temperature: 37°C; atmosphere: air, 95%; carbon dioxide (CO ₂), 5%