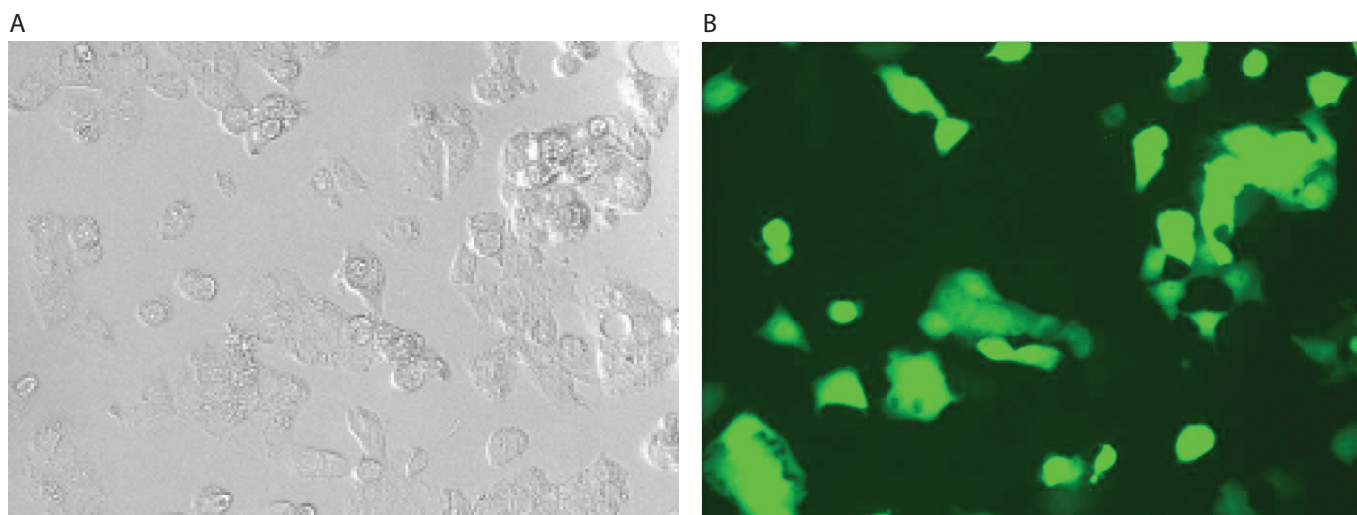


Hep G2



Hep G2 cells were transfected using the Neon™ transfection system and 0.5 µg of a plasmid encoding the EGFP. 24 hours post transfection, the cells were analyzed by light (A) and fluorescence microscopy (B).

Electroporation parameters

Pulse voltage (v)	Pulse width (ms)	Pulse number	Cell density (cells/ml)	Transfection efficiency	Viability	Tip type
1,200	50	1	5 x 10 ⁶	60%	90%	10 µl
1,230	20	3	5 x 10 ⁶	59%	95%	10 µl

Cell information

Cell type/description	Hep G2 (hepatocellular carcinoma)/cell line
Characteristics/species	Adherent/human
Tissue origin	Liver
Media	Dulbecco's Modified Eagle's Medium (DMEM), with 4,500 mg/L D-glucose, L-glutamine, and 110 mg/L sodium pyruvate; 10% FBS
Morphology	Epithelial
Double time	—
Subculturing	Medium renewal: every 2 to 3 days
Culture condition	Temperature: 37°C; atmosphere: air, 95%; carbon dioxide (CO ₂), 5%