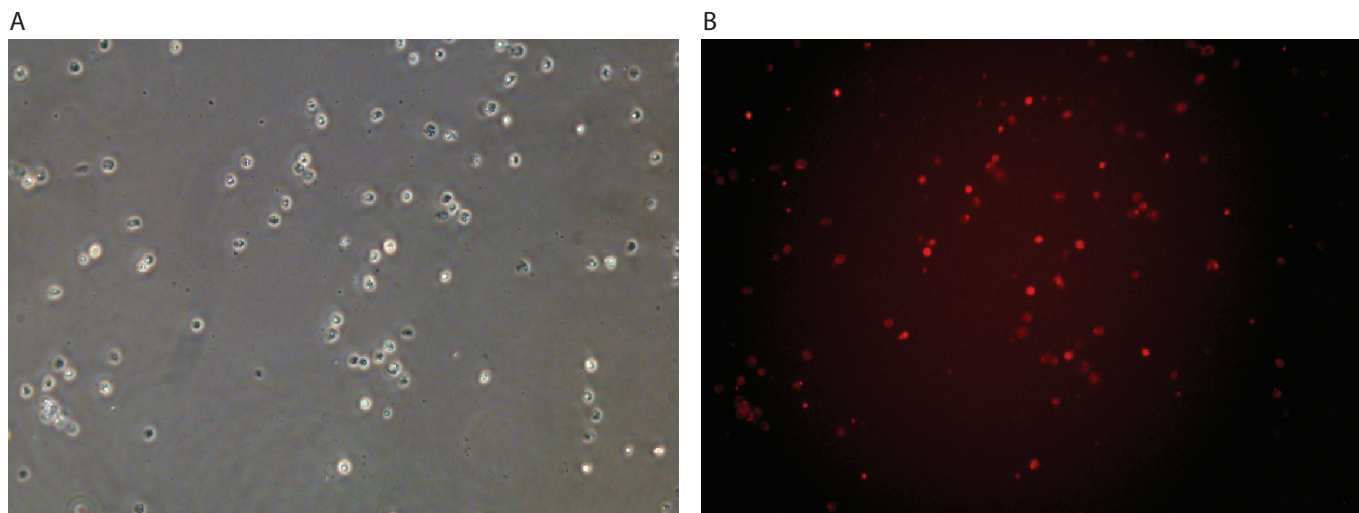


Macrophage



Macrophage cells were transfected using the Neon™ transfection system and 1 µg of a plasmid encoding the RFP. 24 hours post transfection, the cells were analyzed by light (A) and fluorescence microscopy (B).

Electroporation parameters

Pulse voltage (v)	Pulse width (ms)	Pulse number	Cell density (cells/ml)	Transfection efficiency	Viability	Tip type
1,900	30	1	1.5×10^5	60%	60%	10 µl

Cell information

Cell type/description	Macrophage (peritoneal)
Characteristics/species	Primary culture/human
Tissue origin	—
Media	DMEM/F12 (without antibiotic); 10% FBS
Morphology	Round
Double time	Nonproliferate
Subculturing	Cannot subculture
Culture condition	Temperature: 37°C; atmosphere: air, 95%; carbon dioxide (CO ₂), 5%