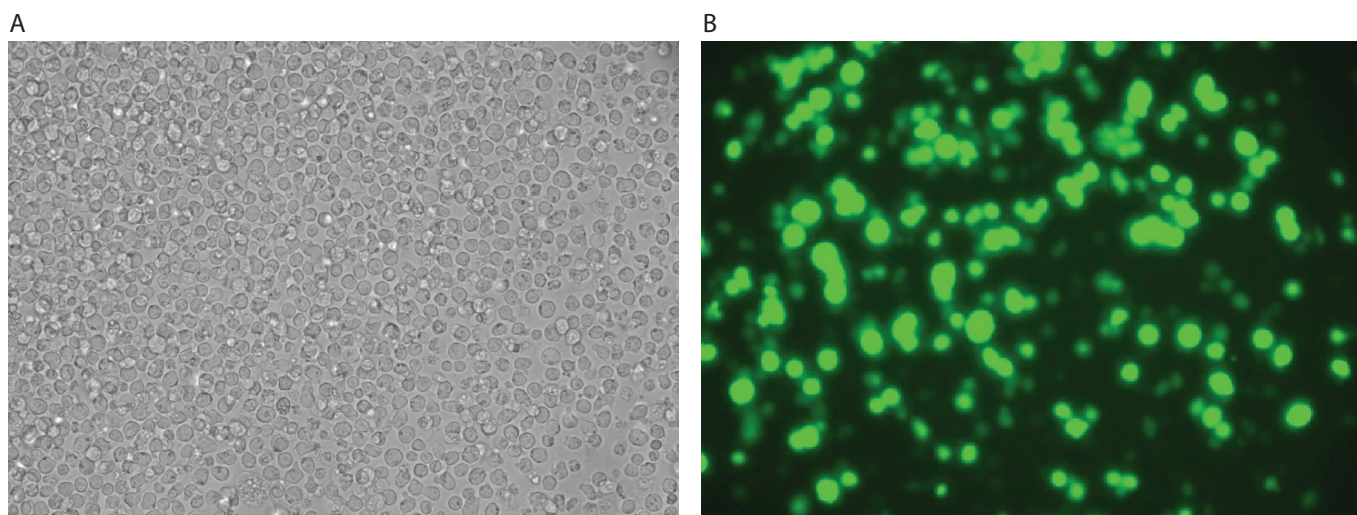


NAMALWA



NAMALWA cells were transfected using the Neon™ transfection system and 0.5 µg of a plasmid encoding the EGFP. 24 hours post transfection, the cells were analyzed by light (A) and fluorescence microscopy (B).

Electroporation parameters

Pulse voltage (v)	Pulse width (ms)	Pulse number	Cell density (cells/ml)	Transfection efficiency	Viability	Tip type
1,100	20	3	5.6 x 10 ⁶	48%	73%	10 µl
1,400	20	2	5.6 x 10 ⁶	44%	82%	10 µl
1,350	20	2	5.6 x 10 ⁷	52%	79%	100 µl

Cell information

Cell type/description	NAMALWA/cell line
Characteristics/species	Suspension/human
Tissue origin	Blood
Media	DMEM:F12(1:1) with 2.5 mM L-glutamine, 15 mM HEPES, and 10% FBS
Morphology	Lymphoblastoid
Double time	—
Subculturing	A subcultivation ratio of 1:4 is recommended
Culture condition	Temperature: 37°C; atmosphere: air, 95%; carbon dioxide (CO ₂), 5%