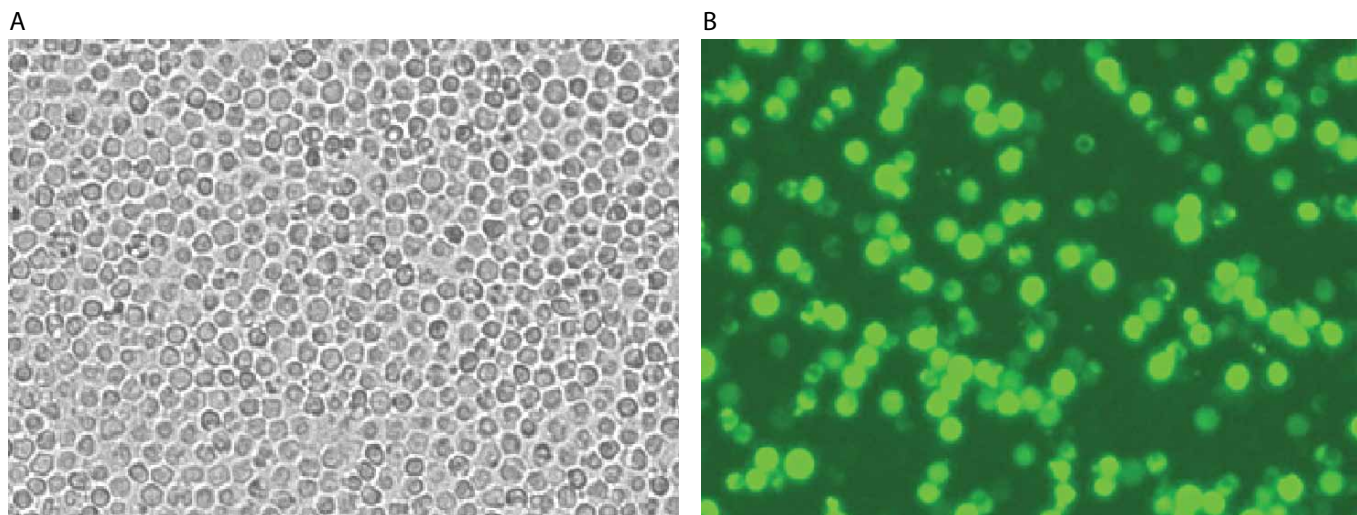


PBMC

This protocol requires Buffer R for Primary Cells.



Peripheral blood mononuclear cells (PBMCs) were transfected using the Neon™ transfection system and 1.0 µg of a plasmid encoding EGFP. 24 hours posttransfection, the cells were analyzed by light (A) and fluorescence microscopy (B).

Electroporation parameters

Pulse voltage (v)	Pulse width (ms)	Pulse number	Cell density (cells/mL)	Transfection efficiency	Viability	Tip type
2,150	20	1	2 x 10 ⁷	23%	95%	10 µL

Cell information

Cell type/Description	PBMC (peripheral blood mononuclear cell)/Primary cell
Characteristics/Species	Suspension/Human
Tissue origin	Blood
Media	RPMI 1640 with L-glutamine and 10% FBS
Morphology	Round single cell
Doubling time	NA
Subculturing	Medium renewal every 2 to 3 days
Culture conditions	Temperature: 37°C; atmosphere: air 95%/carbon dioxide (CO ₂) 5%