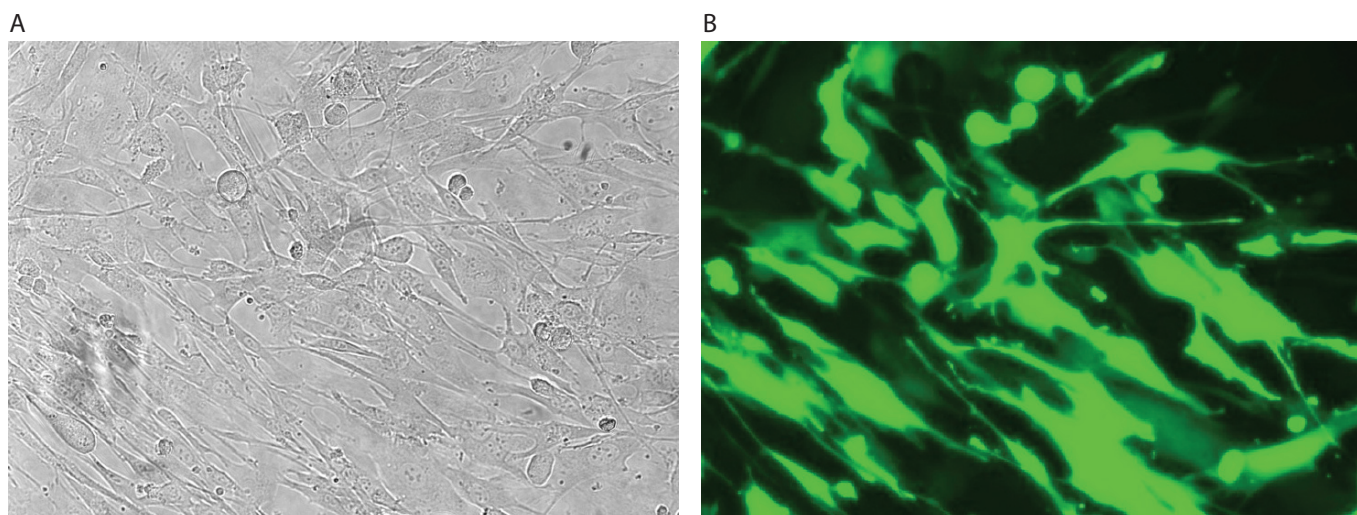


BHK-21



BHK-21 cells were transfected using the Neon™ transfection system and 0.5 µg of a plasmid encoding the EGFP. 24 hours post transfection, the cells were analyzed by light (A) and fluorescence microscopy (B).

Electroporation parameters

Pulse voltage (v)	Pulse width (ms)	Pulse number	Cell density (cells/ml)	Transfection efficiency	Viability	Tip type
1,200	30	1	5.5 x 10 ⁶	91%	90%	10 µl
1,150	20	2	5.5 x 10 ⁶	86%	90%	10 µl

Cell information

Cell type/description	BHK-21/cell line
Characteristics/species	Adherent/hamster
Tissue origin	Kidney
Media	Dulbecco's Modified Eagle's Medium (DMEM), with 4,500 mg/L D-glucose, L-glutamine, and 110 mg/L sodium pyruvate; 10% FBS
Morphology	Fibroblast
Double time	24 hr
Subculturing	Medium renewal: every 2 to 3 days
Culture condition	Temperature: 37°C; atmosphere: air, 95%; carbon dioxide (CO ₂), 5%