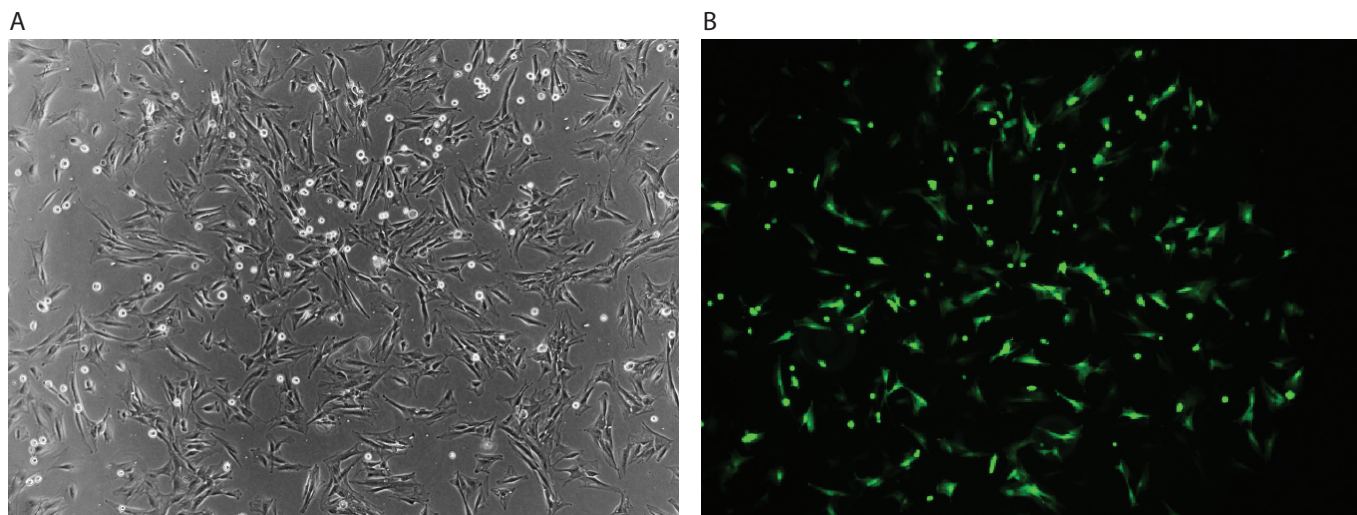


## E. Derm (NBL-6)



E. Derm (NBL-6) cells were transfected using the Neon™ transfection system and 0.5 µg of a plasmid encoding the EGFP. 24 hours post transfection, the cells were analyzed by light (A) and fluorescence microscopy (B).

### Electroporation parameters

Pulse voltage (v)	Pulse width (ms)	Pulse number	Cell density (cells/ml)	Transfection efficiency	Viability	Tip type
1,700	20	1	1 x 10 <sup>7</sup>	72%	75%	10 µl
1,800	20	1	1 x 10 <sup>7</sup>	51%	86%	100 µl

### Cell information

Cell type/description	E. Derm (NBL-6)/cell line
Characteristics/species	Adherent/horse
Tissue origin	Skin
Media	Eagle's Minimum Essential Medium (EMEM) with 2 mM L-glutamine adjusted to contain 1.5 g/L sodium bicarbonate, 1.0 mM sodium pyruvate, and 0.1 mM nonessential amino acids (90%); 10% FBS
Morphology	Fibroblast
Double time	—
Subculturing	Medium renewal: 2 to 3 times per week
Culture condition	Temperature: 37°C; atmosphere: air, 95%; carbon dioxide (CO <sub>2</sub> ), 5%