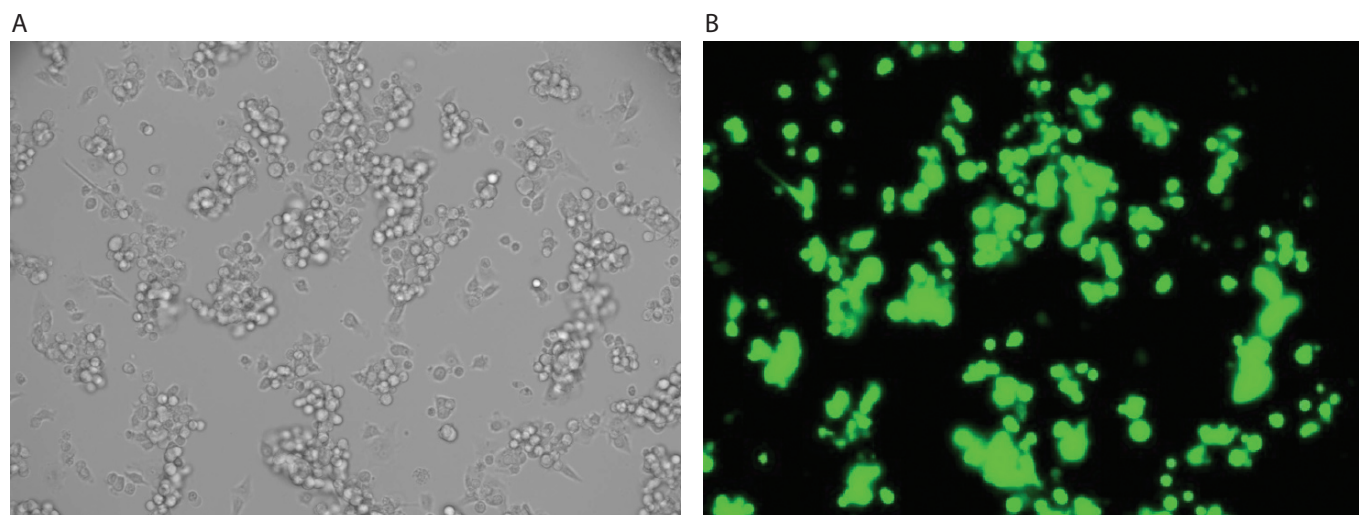


PANC-1



PANC-1 cells were transfected using the Neon™ transfection system and 0.15 µg of a plasmid encoding the EGFP. 24 hours post transfection, the cells were analyzed by light (A) and fluorescence microscopy (B).

Electroporation parameters

Pulse voltage (v)	Pulse width (ms)	Pulse number	Cell density (cells/ml)	Transfection efficiency	Viability	Tip type
1,000	40	2	5.6 x 10 ⁶	50%	41%	10 µl
1,000	35	2	5.6 x 10 ⁶	43%	40%	10 µl
1,150	30	2	5.6 x 10 ⁶	70%	68%	100 µl

Cell information

Cell type/description	PANC-1/cell line
Characteristics/species	Adherent/human
Tissue origin	Pancreas
Media	Dulbecco's Modified Eagle's Medium (DMEM), with 4 mM L-glutamine adjusted to contain 1.5 g/L sodium bicarbonate and 4.5 g/L glucose (90%); 10% FBS
Morphology	Epithelial
Double time	—
Subculturing	A subcultivation ratio of 1:4 is recommended
Culture condition	Temperature: 37°C; atmosphere: air, 95%; carbon dioxide (CO ₂), 5%