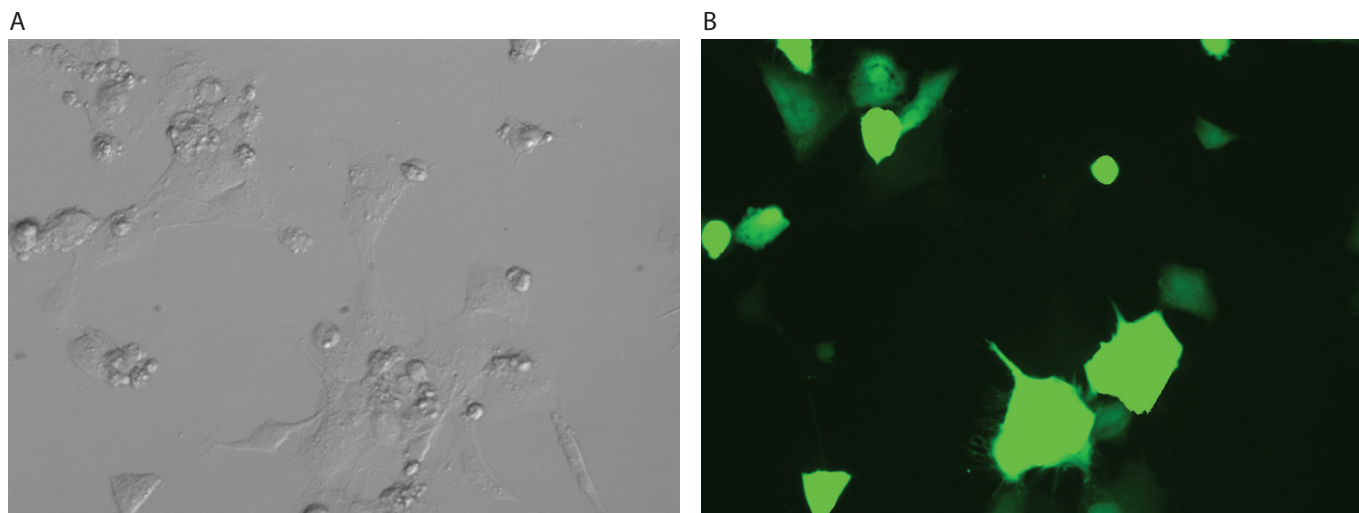


Human Neural Stem Cells (NSC)



Human Neural Stem Cells (NSC) were transfected using the Neon™ transfection system and 0.5 µg of a plasmid encoding the EGFP. 48 hours post transfection, the cells were analyzed by light (A) and fluorescence microscopy (B).

Electroporation parameters

Pulse voltage (v)	Pulse width (ms)	Pulse number	Cell density (cells/ml)	Transfection efficiency	Viability	Tip type
1,300	10	3	1 x 10 ⁷	53%	97%	10 µl
1,100	40	1	1 x 10 ⁷	48%	97%	10 µl

Cell information

Cell type/description	Human Neural Stem Cells (NSC)
Characteristics/species	Adherent/human
Tissue origin	ES cells
Media	Knockout™ DMEM/F12 medium supplemented with StemPro™ NSC SFM supplement (1:50), GlutaMAX™ (1:100), 0.1 mM β-mercaptoethanol, 20 ng/ml of EGF, and 20 ng/ml bFGF
Morphology	Neuron-like
Double time	33–36 hr
Subculturing	Change media every 3–4 days; passage, 1:2
Culture condition	Temperature: 37°C; atmosphere: air, 95%; carbon dioxide (CO ₂), 5%