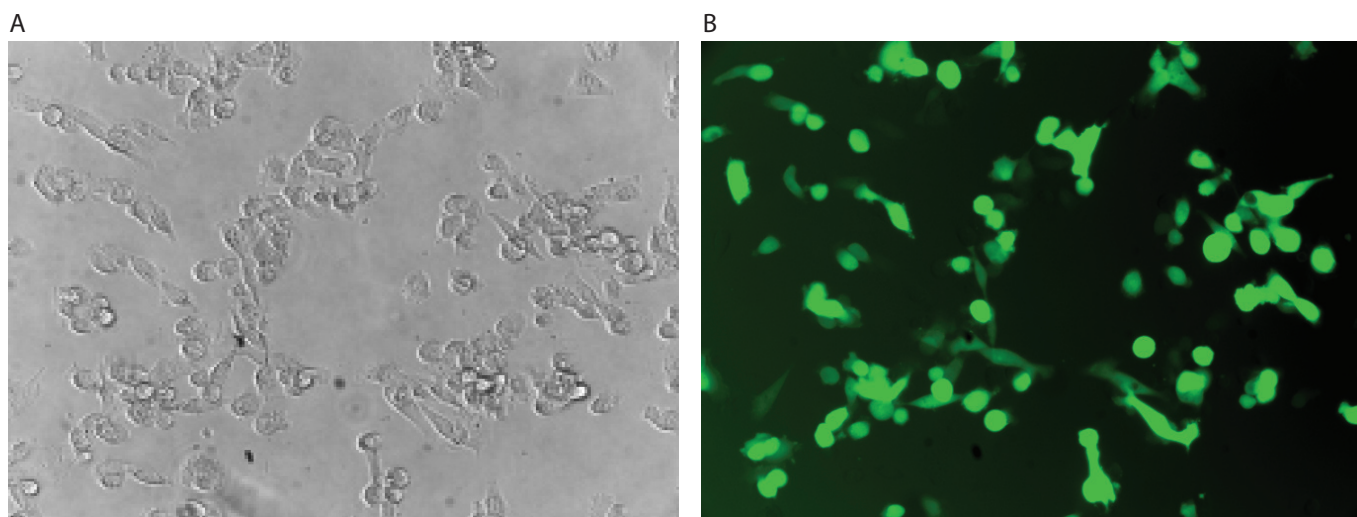


## MDA-MB-231



MDA-MB-231 cells were transfected using the Neon™ transfection system and 0.5 µg of a plasmid encoding the EGFP. 24 hours post transfection, the cells were analyzed by light (A) and fluorescence microscopy (B).

### Electroporation parameters

Pulse voltage (v)	Pulse width (ms)	Pulse number	Cell density (cells/ml)	Transfection efficiency	Viability	Tip type
1,400	10	4	5 x 10 <sup>6</sup>	78%	80%	10 µl
1,350	20	2	5 x 10 <sup>6</sup>	78%	70%	10 µl
1,400	10	4	2.62 x 10 <sup>7</sup>	80%	80%	10 µl

### Cell information

Cell type/description	MDA-MB-231 (adenocarcinoma)/cell line
Characteristics/species	Adherent/human
Tissue origin	Breast
Media	Dulbecco's Modified Eagle's Medium (DMEM), with 4,500 mg/L D-glucose, L-glutamine, and 110 mg/L sodium pyruvate; 10% FBS
Morphology	Epithelial
Double time	—
Subculturing	Medium renewal: every 2 to 3 days
Culture condition	Temperature: 37°C; atmosphere: air, 95%; carbon dioxide (CO <sub>2</sub> ), 5%