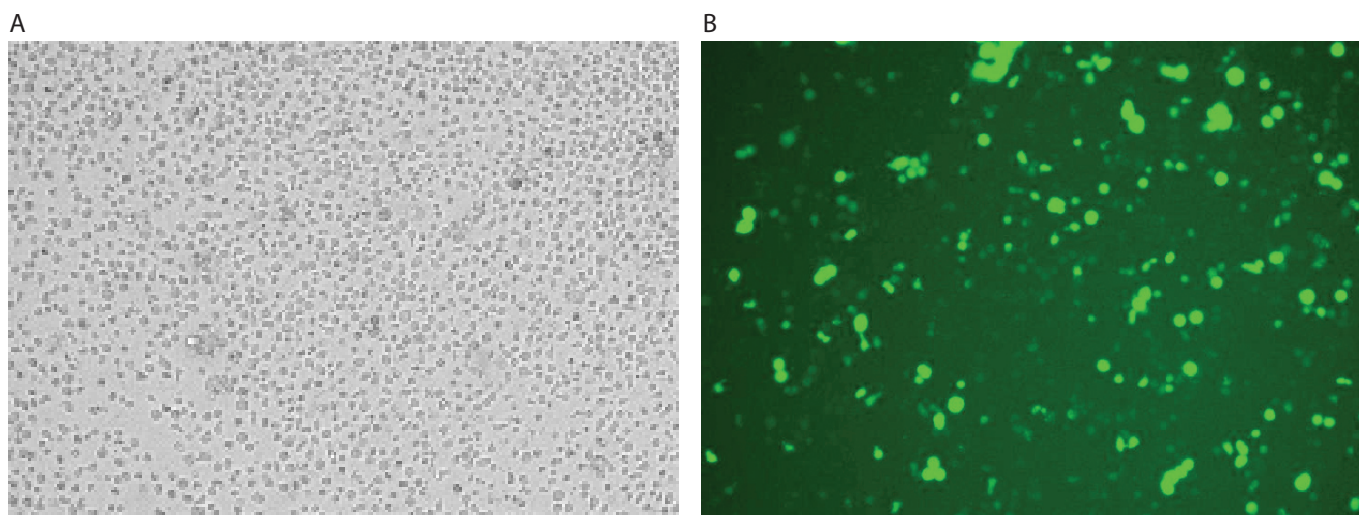


CCRF-CEM



CCRF-CEM cells were transfected using the Neon™ transfection system and 0.5 µg of a plasmid encoding the EGFP. 24 hours post transfection, the cells were analyzed by light (A) and fluorescence microscopy (B).

Electroporation parameters

Pulse voltage (v)	Pulse width (ms)	Pulse number	Cell density (cells/ml)	Transfection efficiency	Viability	Tip type
1,230	40	1	5 x 10 ⁶	70%	75%	10 µl
1,140	45	1	5 x 10 ⁶	68%	70%	10 µl

Cell information

Cell type/description	CCRF-CEM (immune cell/acute T cell leukemia/cell line)
Characteristics/species	Suspension/human
Tissue origin	Blood
Media	RPMI 1640 with L-glutamine; 10% FBS
Morphology	Lymphoblast
Double time	About 26 hr
Subculturing	Add fresh medium (20% to 30% by volume) every 2 to 3 days
Culture condition	Temperature: 37°C; atmosphere: air, 95%; carbon dioxide (CO ₂), 5%